

bs-6772R**[Primary Antibody]****A1BG Rabbit pAb****Bioss**
ANTIBODIES

www.bioss.com.cn

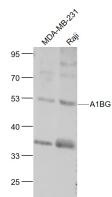
sales@bioss.com.cn

techsupport@bioss.com.cn

400-901-9800

DATASHEET

Host: Rabbit	Isotype: IgG	Applications: WB (1:500-2000)
Clonality: Polyclonal		
GeneID: 1	SWISS: P04217	
Target: A1BG		
Immunogen: KLH conjugated synthetic peptide derived from human A1BG: 301-400/495.		
Purification: affinity purified by Protein A		
Concentration: 1mg/ml		
Storage: 0.01M TBS (pH7.4) with 1% BSA, 0.02% Proclin300 and 50% Glycerol. Shipped at 4°C. Store at -20°C for one year. Avoid repeated freeze/thaw cycles.		Reactivity: Human (predicted: Mouse, Rat)
Background: The protein encoded by this gene is a plasma glycoprotein of unknown function. The protein shows sequence similarity to the variable regions of some immunoglobulin supergene family member proteins. [provided by RefSeq, Jul 2008].		Predicted MW.: 52 kDa
		Subcellular Location: Secreted

VALIDATION IMAGES

Sample: MDA-MB-231 (Human) Cell Lysate at 30

ug Raji (Human) Cell Lysate at 30 ug Primary:

Anti- A1BG (bs-6772R) at 1/1000 dilution

Secondary: IRDye800CW Goat Anti-Rabbit IgG at

1/20000 dilution Predicted band size: 52 kD

Observed band size: 52 kD

SELECTED CITATIONS

- **[IF=2.17]** Satoh, Kazumi, et al. "Monitoring of Serial Presurgical and Postsurgical Changes in the Serum Proteome in a Series of Patients with Calcific Aortic Stenosis." Disease Markers (2015). WB ;="Human". 26078484