

**bs-6771R**

**[ Primary Antibody ]**

## ERN2 Rabbit pAb

**Bioss**  
ANTIBODIES

www.bioss.com.cn

sales@bioss.com.cn

techsupport@bioss.com.cn

400-901-9800

### — DATASHEET —

**Host:** Rabbit

**Isotype:** IgG

**Clonality:** Polyclonal

**Target:** ERN2

**Immunogen:** KLH conjugated synthetic peptide derived from human ERN2: 465-550/926.

**Purification:** affinity purified by Protein A

**Concentration:** 1mg/ml

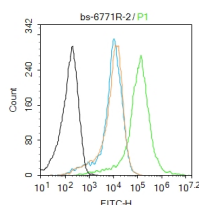
**Storage:** 0.01M TBS (pH7.4) with 1% BSA, 0.02% Proclin300 and 50% Glycerol.  
Shipped at 4°C. Store at -20°C for one year. Avoid repeated freeze/thaw cycles.

**Applications:** Flow-Cyt (2ug/Test)

**Reactivity:** Mouse  
(predicted: Human,  
Rat, Pig, Sheep, Cow,  
Dog)

**Predicted  
MW.:** 98 kDa

### — VALIDATION IMAGES —



Blank control: Mouse spleen. Primary Antibody (green line): Rabbit Anti-ERN2 antibody (bs-6771R) Dilution: 2 $\mu$ g/10<sup>6</sup> cells; Isotype Control Antibody (orange line): Rabbit IgG. Secondary Antibody: Goat anti-rabbit IgG-AF488 Dilution: 1 $\mu$ g/test. Protocol The cells were fixed with 70% ethanol (10min at room temperature) and then were incubated in 5%BSA to block non-specific protein-protein interactions for 30 min at room temperature. Cells stained with Primary Antibody for 30 min at room temperature. The secondary antibody used for 40 min at room temperature. Acquisition of 20,000 events was performed.