

bs-6790R**[Primary Antibody]****Bioss**
ANTIBODIES

www.bioss.com.cn

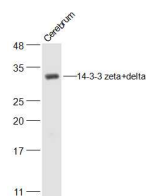
sales@bioss.com.cn

techsupport@bioss.com.cn

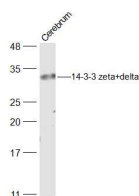
400-901-9800

14-3-3 zeta+delta Rabbit pAb**— DATASHEET —**

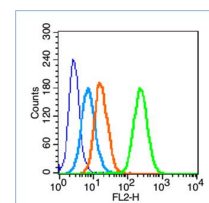
Host: Rabbit	Isotype: IgG	Applications: WB (1:500-2000) Flow-Cyt (1ug/Test)
Clonality: Polyclonal		Reactivity: Human, Mouse, Rat (predicted: Rabbit, Cow, Chicken, Dog, Horse)
GeneID: 7529	SWISS: P31946	Predicted MW.: 27 kDa
Target: 14-3-3 zeta+delta		Subcellular Location: Cytoplasm
Immunogen: KLH conjugated synthetic peptide derived from human 14-3-3 zeta/delta: 51-150/245.		
Purification: affinity purified by Protein A		
Concentration: 1mg/ml		
Storage: 0.01M TBS (pH7.4) with 1% BSA, 0.02% Proclin300 and 50% Glycerol. Shipped at 4°C. Store at -20°C for one year. Avoid repeated freeze/thaw cycles.		
Background: Adapter protein implicated in the regulation of a large spectrum of both general and specialized signaling pathways. Binds to a large number of partners, usually by recognition of a phosphoserine or phosphothreonine motif. Binding generally results in the modulation of the activity of the binding partner.		

— VALIDATION IMAGES —

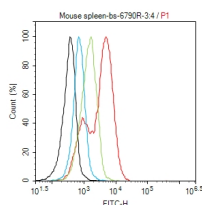
Sample: Cerebrum (Mouse) Lysate at 40 ug
Primary: Anti-14-3-3 zeta+delta (bs-6790R) at 1/500 dilution Secondary: IRDye800CW Goat Anti-Rabbit IgG at 1/20000 dilution Predicted band size: 27 kD Observed band size: 27 kD



Sample: Cerebrum (Rat) Lysate at 40 ug Primary: Anti-14-3-3 zeta+delta (bs-6790R) at 1/500 dilution Secondary: IRDye800CW Goat Anti-Rabbit IgG at 1/20000 dilution Predicted band size: 27 kD Observed band size: 27 kD



Blank control (blue line): HL60 (fixed with 70% ethanol (overnight at 4°C) and then permeabilized with 0.1% PBS-Tween for 20 min at room temperature). Primary Antibody (green line): Rabbit Anti-14-3-3 zeta+delta antibody (bs-6790R), Dilution: 0.2µg /10⁶ cells; Isotype Control Antibody (orange line): Rabbit IgG . Secondary Antibody (white blue line): Goat anti-rabbit IgG-PE



Blank control (black line): Raji (black) (The cells were fixed with 2% paraformaldehyde (10 min) , then permeabilized with PBST for 30 min on room temperature) Primary Antibody (red line): Rabbit Anti-14-3-3 zeta+delta antibody (bs-6790R) ; Dilution: 1µg /10⁶ cells; Isotype Control Antibody (green line): Rabbit IgG . Secondary Antibody (white blue line): Goat anti-rabbit IgG-PE; Dilution: 1µg /test.

Important Note: This product as supplied is intended for research use only, not for use in human, therapeutic or diagnostic applications.