

bs-5549R**[Primary Antibody]****phospho-Paxillin (Ser83) Rabbit pAb****Bioss**
ANTIBODIES

www.bioss.com.cn

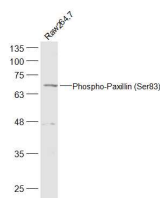
sales@bioss.com.cn

techsupport@bioss.com.cn

400-901-9800

— DATASHEET —

| | | |
|--|----------------------|---|
| Host: Rabbit | Isotype: IgG | Applications: WB (1:500-2000) |
| Clonality: Polyclonal | | Reactivity: Mouse (predicted: Rat) |
| GeneID: 360820 | SWISS: Q66H76 | |
| Target: Paxillin (Ser83) | | |
| Immunogen: KLH conjugated Synthesised phosphopeptide derived from rat Paxillin around the phosphorylation site of Ser83: PP(p-S)PS. | | Predicted MW.: 68 kDa |
| Purification: affinity purified by Protein A | | Subcellular Location: Cell membrane ,Cytoplasm |
| Concentration: 1mg/ml | | |
| Storage: 0.01M TBS (pH7.4) with 1% BSA, 0.02% Proclin300 and 50% Glycerol. Shipped at 4°C. Store at -20°C for one year. Avoid repeated freeze/thaw cycles. | | |
| Background: Paxillin is a 64 kDa cytoskeletal adapter protein involved in organisation and function of focal adhesions, which are critical to cell adhesion and migration. This in turn plays a role in a wide variety of processes including embryogenesis, organogenesis, wound repair, inflammation and cancer. Paxillin contains LD motifs, LIM domains, SH3 and SH2 binding domains that serve as docking sites for cytoskeletal proteins, tyrosine kinases (e.g., FAK, Pyk 2, Src), serine/threonine kinases, GTPase activating proteins and other adaptor proteins (e.g., Actin, Vinculin, Crk). | | |

— VALIDATION IMAGES —

Sample: Raw264.7(Mouse) Cell Lysate at 30 ug
Primary: Anti-Phospho-Paxillin
(Ser83) (bs-5549R) at 1/500 dilution Secondary:
IRDye800CW Goat Anti-Rabbit IgG at 1/20000
dilution Predicted band size: 68 kD Observed
band size: 68 kD