

CBL Rabbit pAb

Catalog Number: bs-2757R

Target Protein: CBL

Concentration: 1mg/ml

Form: Liquid

Host: Rabbit

Clonality: Polyclonal

Isotype: IgG

Applications: WB (1:500-2000)

Reactivity: Human, Mouse, Rat (predicted:Rabbit, Pig, Cow, Dog, Horse)

Predicted MW: 100 kDa

Swiss Prot: P22681

Source: KLH conjugated synthetic peptide derived from human CBL2: 351-450/906.

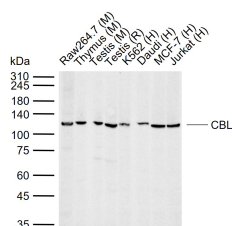
Purification: affinity purified by Protein A

Storage: 0.01M TBS (pH7.4) with 1% BSA, 0.02% Proclin300 and 50% Glycerol.

Shipped at 4°C. Store at -20°C for one year. Avoid repeated freeze/thaw cycles.

Background: Participates in signal transduction in hematopoietic cells. Adapter protein that functions as a negative regulator of many signaling pathways that start from receptors at the cell surface. Acts as an E3 ubiquitin-protein ligase, which accepts ubiquitin from specific E2 ubiquitin-conjugating enzymes, and then transfers it to substrates promoting their degradation by the proteasome. Recognizes activated receptor tyrosine kinases, including PDGFA, EGF and CSF1, and terminates signaling.

VALIDATION IMAGES



Sample: Lane 1: Mouse Raw264.7 cell lysates Lane 2: Mouse Thymus tissue lysates Lane 3: Mouse Testis tissue lysates Lane 4: Rat Testis tissue lysates Lane 5: Human K562 cell lysates Lane 6: Human Daudi cell lysates Lane 7: Human MCF-7 cell lysates Lane 8: Human Jurkat cell lysates Primary: Anti-CBL (bs-2757R) at 1/1000 dilution Secondary: IRDye800CW Goat Anti-Rabbit IgG at 1/20000 dilution Predicted band size: 100 kDa Observed band size: 120 kDa