

**bs-1014R****[ Primary Antibody ]****BioSS**  
ANTIBODIES

www.bioss.com.cn

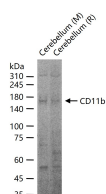
sales@bioss.com.cn

techsupport@bioss.com.cn

400-901-9800

**CD11b Rabbit pAb****— DATASHEET —**

<b>Host:</b> Rabbit	<b>Isotype:</b> IgG	<b>Applications:</b> WB (1:500-2000)
<b>Clonality:</b> Polyclonal		<b>Reactivity:</b> Human, Mouse, Rat
<b>Target:</b> CD11b		
<b>Immunogen:</b> KLH conjugated synthetic peptide derived from mouse CD11b: 77-180/1152.		<b>Predicted MW.:</b> 125 kDa
<b>Purification:</b> affinity purified by Protein A		<b>Subcellular Location:</b> Cell membrane
<b>Concentration:</b> 1mg/ml		
<b>Storage:</b> 0.01M TBS (pH7.4) with 1% BSA, 0.02% Proclin300 and 50% Glycerol. Shipped at 4°C. Store at -20°C for one year. Avoid repeated freeze/thaw cycles.		
<b>Background:</b> This gene encodes the integrin alpha M chain. Integrins are heterodimeric integral membrane proteins composed of an alpha chain and a beta chain. This I-domain containing alpha integrin combines with the beta 2 chain (ITGB2) to form a leukocyte-specific integrin referred to as macrophage receptor 1 ('Mac-1'), or inactivated-C3b (iC3b) receptor 3 ('CR3'). The alpha M beta 2 integrin is important in the adherence of neutrophils and monocytes to stimulated endothelium, and also in the phagocytosis of complement coated particles. Multiple transcript variants encoding different isoforms have been found for this gene. [provided by RefSeq, Mar 2009]		

**— VALIDATION IMAGES —**

25 ug total protein per lane of various lysates (see on figure) probed with CD11b polyclonal antibody, unconjugated (bs-1014R) at 1:1000 dilution and 4°C overnight incubation. Followed by conjugated secondary antibody incubation at r.t. for 60 min.

**— SELECTED CITATIONS —**

- **[IF=41.577]** Yamaguchi T et al. "Interspecies organogenesis generates autologous functional islets." Nature. 2017 Feb 9;542(7640):191-196. IF ;Mouse&Rat. 28117444
- **[IF=30.849]** Yao Li. et al. Rapid surface display of mRNA antigens by bacteria-derived outer membrane vesicles for a personalized tumor vaccine. 2022 Mar 22 IF ;Mouse. 35315546
- **[IF=15.304]** Xuan Li. et al. ROS-responsive hydrogel coating modified titanium promotes vascularization and osteointegration of bone defects by orchestrating immunomodulation. BIOMATERIALS. 2022 Aug;287:121683 IHC,IF ;Rat. 35870263
- **[IF=11.7]** Hong Wu. et al. HMMR triggers immune evasion of hepatocellular carcinoma by inactivation of phagocyte killing. SCI ADV. 2024 Jun;10(23) IF ;Mouse. 38838151

Important Note: This product as supplied is intended for research use only, not for use in human, therapeutic or diagnostic applications.

- **[IF=12.121]** Shanshan Hu. et al. A mussel-inspired film for adhesion to wet buccal tissue and efficient buccal drug delivery. Nat Commun. 2021 Mar;12(1):1-17 IHC ;Rat. 33727548