

bs-0810R**[Primary Antibody]****Fibulin 5 Rabbit pAb****Bioss**
ANTIBODIES

www.bioss.com.cn

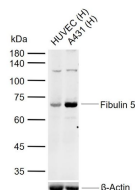
sales@bioss.com.cn

techsupport@bioss.com.cn

400-901-9800

— DATASHEET —

Host: Rabbit	Isotype: IgG	Applications: WB (1:500-2000) IHC-P (1:100-500) IHC-F (1:100-500) IF (1:100-500) ICC/IF (1:100-500) Reactivity: Human (predicted: Mouse, Rat, Rabbit, Pig, Sheep, Cow, Dog, Horse) Predicted MW.: 48 kDa Subcellular Location: Secreted
Clonality: Polyclonal		
GeneID: 10516	SWISS: Q9UBX5	
Target: Fibulin 5		
Immunogen: KLH conjugated synthetic peptide derived from human Fibulin 5: 101-200/448.		
Purification: affinity purified by Protein A		
Concentration: 1mg/ml		
Storage: 0.01M TBS (pH7.4) with 1% BSA, 0.02% Proclin300 and 50% Glycerol. Shipped at 4°C. Store at -20°C for one year. Avoid repeated freeze/thaw cycles.		
Background: Fibulin 5: A protein that belongs to a family of extracellular proteins expressed in the basement membranes of blood vessels. Fibulin 5 may be essential for the polymerization of elastin. Missense mutations in FBLN5, the gene that encodes fibulin 5, appear responsible for 1-2% of cases of age-related macular degeneration (AMD). FBLN5 is located on chromosome 14 in band 14q32.1. See also: Fibulin 3. May play a role in vascular growth and maturation during development and in lesions of injured vessels.		

— VALIDATION IMAGES —

Sample: Lane 1: Human HUVEC cell lysates Lane 2: Human A431 cell lysates Primary: Anti-Fibulin 5 (bs-0810R) at 1/1000 dilution Secondary: IRDye800CW Goat Anti-Rabbit IgG at 1/20000 dilution Predicted band size: 48 kDa Observed band size: 70 kDa

— SELECTED CITATIONS —

- **[IF=1.58]** Liao, Yiwei, et al. "Fibulin-5 inhibits the cell proliferation, migration and angiogenesis in glioma." Int J Clin Exp Pathol 9.9 (2016): 8943-8952. IHC ;="Human". ISSN:1936-2625/IJCEP0034986