

FGL2 Rabbit pAb

Catalog Number: bs-0315R

Target Protein: FGL2

Concentration: 1mg/ml

Form: Liquid

Host: Rabbit

Clonality: Polyclonal

Isotype: IgG

Applications: IHC-P (1:100-500), IHC-F (1:100-500), IF (1:100-500)

Reactivity: Rat

Predicted MW: 49 kDa

Entrez Gene: 84586

Source: KLH conjugated synthetic peptide derived from Rat FGL2: 75-150/422.

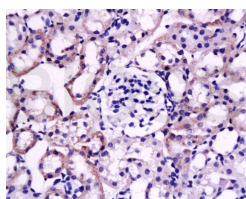
Purification: affinity purified by Protein A

Storage: 0.01M TBS (pH7.4) with 1% BSA, 0.02% Proclin300 and 50% Glycerol.

Shipped at 4°C. Store at -20°C for one year. Avoid repeated freeze/thaw cycles.

Background: FGL2 is a secreted protein that is similar to the beta- and gamma-chains of fibrinogen. The carboxyl-terminus of the encoded protein consists of the fibrinogen-related domains (FRED). The encoded protein forms a tetrameric complex which is stabilized by interchain disulfide bonds. It may play a role in physiologic functions at mucosal sites. It is constitutively expressed in cytotoxic T-cells. Lack of expression in other lymphoid- and nonlymphoid-derived cell lines suggested that expression of FGL2 may be restricted to lymphocytes. FGL2 is induced via a mechanism involving IFNG and components of the IFNG signaling pathway, including STAT1 and IRF1.

VALIDATION IMAGES



Tissue/cell: rat kidney tissue; 4% Paraformaldehyde-fixed and paraffin-embedded; Antigen retrieval: citrate buffer (0.01M, pH 6.0), Boiling bathing for 15min; Block endogenous peroxidase by 3% Hydrogen peroxide for 30min; Blocking buffer (normal goat serum,C-0005) at 37°C for 20 min; Incubation: Anti-fg-12 Polyclonal Antibody, Unconjugated(bs-0315R) 1:200, overnight at 4°C, followed by conjugation to the secondary antibody(SP-0023) and DAB(C-0010) staining

PRODUCT SPECIFIC PUBLICATIONS

[IF=34.661] Yang, Siyoung, et al. "Regulatory T cells generated early in life play a distinct role in maintaining self-tolerance." Science 348.6234 (2015): 589-594. FCM ; Mouse . 25791085