

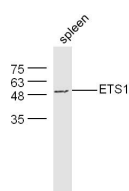
**bs-1285R****[ Primary Antibody ]****ETS1 Rabbit pAb****Bioss**  
**ANTIBODIES**

www.bioss.com.cn

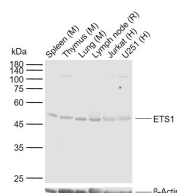
sales@bioss.com.cn

techsupport@bioss.com.cn

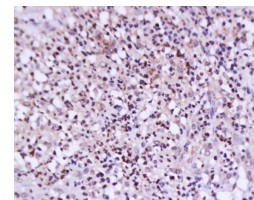
400-901-9800

**DATASHEET****Host:** Rabbit**Isotype:** IgG**Clonality:** Polyclonal**GeneID:** 2113**SWISS:** P14921**Target:** ETS1**Immunogen:** KLH conjugated synthetic peptide derived from human Ets1: 321-441/441.**Purification:** affinity purified by Protein A**Concentration:** 1mg/ml**Storage:** 0.01M TBS (pH7.4) with 1% BSA, 0.02% Proclin300 and 50% Glycerol.  
Shipped at 4°C. Store at -20°C for one year. Avoid repeated freeze/thaw cycles.**Background:** This gene encodes a member of the ETS family of transcription factors, which are defined by the presence of a conserved ETS DNA-binding domain that recognizes the core consensus DNA sequence GGAA/T in target genes. These proteins function either as transcriptional activators or repressors of numerous genes, and are involved in stem cell development, cell senescence and death, and tumorigenesis. Alternatively spliced transcript variants encoding different isoforms have been described for this gene.[provided by RefSeq, Jul 2011].**Applications:** WB (1:500-2000)**IHC-P** (1:100-500)**IHC-F** (1:100-500)**IF** (1:100-500)**Flow-Cyt** (1ug/Test)**Reactivity:** Human, Mouse, Rat  
(predicted: Rabbit, Pig, Cow, Chicken, Dog, GuineaPig, Horse)**Predicted MW.:** 49 kDa**Subcellular Location:** Nucleus**VALIDATION IMAGES**

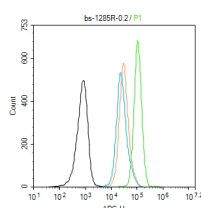
Sample: Spleen (Mouse) Lysate at 30 ug  
Primary: Anti- ETS1 (bs-1285R) at 1/300 dilution  
Secondary: IRDye800CW Goat Anti-Mouse IgG at 1/20000 dilution  
Predicted band size: 49 kD  
Observed band size: 49 kD



Sample: Lane 1: Mouse Spleen tissue lysates  
Lane 2: Mouse Thymus tissue lysates  
Lane 3: Mouse Lung tissue lysates  
Lane 4: Rat Lymph node tissue lysates  
Lane 5: Human Jurkat cell lysates  
Lane 6: Human U251 cell lysates  
Primary: Anti-ETS1 (bs-1285R) at 1/1000 dilution  
Secondary: IRDye800CW Goat Anti-Rabbit IgG at 1/20000 dilution  
Predicted band size: 49 kDa  
Observed band size: 50 kDa



Tissue/cell: human breast carcinoma; 4% Paraformaldehyde-fixed and paraffin-embedded; Antigen retrieval: citrate buffer (0.01M, pH 6.0), Boiling bathing for 15min; Block endogenous peroxidase by 3% Hydrogen peroxide for 30min; Blocking buffer (normal goat serum, C-0005) at 37°C for 20 min; Incubation: Anti-ETS1 Polyclonal Antibody, Unconjugated(bs-1285R) 1:200, overnight at 4°C, followed by conjugation to the secondary antibody(SP-0023) and DAB(C-0010) staining



Blank control: A431. Primary Antibody (green line): Rabbit Anti-ETS1 antibody (bs-1285R)  
Dilution: 0.2µg / 10<sup>6</sup> cells; Isotype Control Antibody (orange line): Rabbit IgG. Secondary Antibody : Goat anti-rabbit IgG-AF647 Dilution:

**Important Note:** This product as supplied is intended for research use only, not for use in human, therapeutic or diagnostic applications.

1µg /test. Protocol The cells were fixed with 4% PFA (10min at room temperature)and then permeabilized with 90% ice-cold methanol for 20 min at -20°C. The cells were then incubated in 5%BSA to block non-specific protein-protein interactions for 30 min at at room temperature .Cells stained with Primary Antibody for 30 min at room temperature. The secondary antibody used for 40 min at room temperature. Acquisition of 20,000 events was performed.

---

## — SELECTED CITATIONS —

- **[IF=2.4]** Shu Li. et al.Unraveling the Dual Role of circ-CBLB and ETS-1 in Rheumatoid Arthritis: Biomarkers and Therapeutic Targets..International Journal of Rheumatic Diseases.2025 Mar;28(3):e70167. Cck-8 assay ;Human. 40095292