

---

## Acid Phosphatase Rabbit pAb

Catalog Number: bs-6291R

Target Protein: Acid Phosphatase

Concentration: 1mg/ml

Form: Liquid

Host: Rabbit

Clonality: Polyclonal

Isotype: IgG

Applications: IHC-P (1:100-500), IHC-F (1:100-500), IF (1:100-500)

Reactivity: Mouse (predicted:Human, Rat, Rabbit, Pig, Cow, Dog, Horse)

Predicted MW: 18 kDa

Subcellular: Cytoplasm

Locations:

Entrez Gene: 52

Swiss Prot: P24666

Source: KLH conjugated synthetic peptide derived from human Acid Phosphatase: 71-158/158.

Purification: affinity purified by Protein A

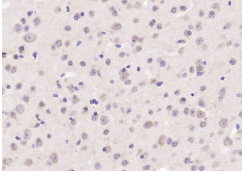
Storage: 0.01M TBS (pH7.4) with 1% BSA, 0.02% Proclin300 and 50% Glycerol.

Shipped at 4°C. Store at -20°C for one year. Avoid repeated freeze/thaw cycles.

**Background:** Phosphatase enzymes catalyse hydrolysis of phosphoric acid esters of various alcohols, e.g. a hexose phosphate, to yield the alcohol and free inorganic phosphate. This may be a way of recycling phosphate in the cell, and the level of phosphate may be elevated under conditions of phosphate starvation (in algae for example). Acid phosphatases have pH optima below 7, whereas alkaline phosphatases are most active above pH 7. Commercial quantities of acid phosphatase are obtained from plant sources e.g. potato and wheat germ, whereas similar quantities of alkaline phosphatase are obtained from animal intestine and bacteria.

### VALIDATION IMAGES

---



Paraformaldehyde-fixed, paraffin embedded (mouse brain); Antigen retrieval by boiling in sodium citrate buffer (pH6.0) for 15min; Block endogenous peroxidase by 3% hydrogen peroxide for 20 minutes; Blocking buffer (normal goat serum) at 37°C for 30min; Antibody incubation with (Acid Phosphatase) Polyclonal Antibody, Unconjugated (bs-6291R) at 1:200 overnight at 4°C, followed by operating according to SP Kit(Rabbit) (sp-0023) instructions and DAB staining.