
ACPT Rabbit pAb

Catalog Number: bs-6289R

Target Protein: ACPT

Concentration: 1mg/ml

Form: Liquid

Host: Rabbit

Clonality: Polyclonal

Isotype: IgG

Applications: Flow-Cyt (0.2ug/test)

Reactivity: Human (predicted:Mouse, Rat, Dog, Horse)

Predicted MW: 47 kDa

Subcellular: Cell membrane

Locations:

Entrez Gene: 93650

Swiss Prot: Q9BZG2

Source: KLH conjugated synthetic peptide derived from human ACPT: 65-160/437.

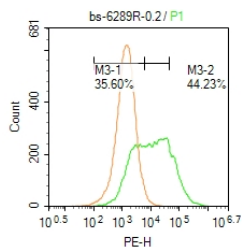
Purification: affinity purified by Protein A

Storage: 0.01M TBS (pH7.4) with 1% BSA, 0.02% Proclin300 and 50% Glycerol.

Shipped at 4°C. Store at -20°C for one year. Avoid repeated freeze/thaw cycles.

Background: Acid phosphatases are enzymes capable of hydrolyzing orthophosphoric acid esters in an acid medium. This gene is upregulated by androgens and is down-regulated by estrogens in the prostate cancer cell line. ACPT dephosphorylates receptor tyrosine-protein kinase erbB-4 and inhibits the ligand-induced proteolytic cleavage. ACPT is predominantly expressed in testis but exhibits a lower level of expression in testicular cancer tissues than in normal tissues. ACPT has structural similarity to prostatic and lysosomal acid phosphatases. Alternatively spliced transcript variants have been described, but their biological validity has not been determined.

VALIDATION IMAGES



Blank control: Hela. Primary Antibody (green line): Rabbit Anti-ACPT antibody (bs-6289R) Dilution: $1\mu\text{g}/10^6$ cells; Isotype Control Antibody (orange line): Rabbit IgG . Secondary Antibody : Goat anti-rabbit IgG-PE Dilution: $0.2\mu\text{g}/\text{test}$. Protocol The cells were incubated in 5 %BSA to block non-specific protein-protein interactions for 30 min at room temperature .Cells stained with Primary Antibody for 30 min at room temperature. The secondary antibody used for 40 min at room temperature. Acquisition of 20,000 events was performed.