

bs-4277R

[Primary Antibody]

ENPP7 Rabbit pAb

BioSS
ANTIBODIES

www.bioss.com.cn

sales@bioss.com.cn

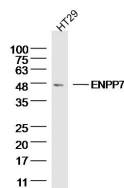
techsupport@bioss.com.cn

400-901-9800

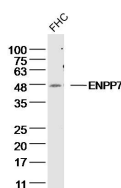
— DATASHEET —

Host: Rabbit	Isotype: IgG	Applications: WB (1:500-2000)
Clonality: Polyclonal		
GeneID: 339221	SWISS: Q6UWV6	
Target: ENPP7		
Immunogen: KLH conjugated synthetic peptide derived from human ENPP7: 351-458/458.		
Purification: affinity purified by Protein A		Reactivity: Human (predicted: Mouse, Rat, Rabbit)
Concentration: 1mg/ml		Predicted MW.: 50 kDa
Storage: 0.01M TBS (pH7.4) with 1% BSA, 0.02% Proclin300 and 50% Glycerol. Shipped at 4°C. Store at -20°C for one year. Avoid repeated freeze/thaw cycles.		Subcellular Location: Cell membrane ,Cytoplasm
Background: Converts sphingomyelin to ceramide. Also has phospholipase C activity toward palmitoyl lyso-phosphocholine. Does not appear to have nucleotide pyrophosphatase activity.		

— VALIDATION IMAGES —



Sample: HT29 (human) Cell Lysate at 40 ug
Primary: Anti- ENPP7 (bs-4277R) at 1/300
dilution Secondary: IRDye800CW Goat Anti-
Rabbit IgG at 1/20000 dilution Predicted band
size: 50 kD Observed band size: 50 kD



Sample: FHC (human) Cell Lysate at 40 ug
Primary: Anti- ENPP7 (bs-4277R) at 1/300
dilution Secondary: IRDye800CW Goat Anti-
Rabbit IgG at 1/20000 dilution Predicted band
size: 50 kD Observed band size: 48 kD