

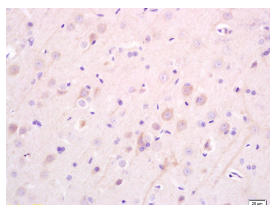
bs-4275R**[Primary Antibody]****Bioss**
ANTIBODIES

www.bioss.com.cn

sales@bioss.com.cn

techsupport@bioss.com.cn

400-901-9800

EBF3 Rabbit pAb**DATASHEET****Host:** Rabbit**Isotype:** IgG**Clonality:** Polyclonal**GeneID:** 253738**SWISS:** Q9H4W6**Target:** EBF3**Immunogen:** KLH conjugated synthetic peptide derived from human EB3: 75-185/281.**Purification:** affinity purified by Protein A**Concentration:** 1mg/ml**Storage:** 0.01M TBS (pH7.4) with 1% BSA, 0.02% Proclin300 and 50% Glycerol.
Shipped at 4°C. Store at -20°C for one year. Avoid repeated freeze/thaw cycles.**Background:** May be involved in microtubule polymerization, and spindle function by stabilizing microtubules and anchoring them at centrosomes. May play a role in cell migration.**Applications:** IHC-P (1:100-500)**IHC-F** (1:100-500)**IF** (1:100-500)**Reactivity:** Rat (predicted: Human, Mouse, Rabbit, Pig, Cow, Chicken, Dog)**Predicted MW.:** 25 kDa**Subcellular Location:** Cytoplasm**VALIDATION IMAGES**

Tissue/cell: rat brain tissue; 4% Paraformaldehyde-fixed and paraffin-embedded; Antigen retrieval: citrate buffer (0.01M, pH 6.0), Boiling bathing for 15min; Block endogenous peroxidase by 3% Hydrogen peroxide for 30min; Blocking buffer (normal goat serum, C-0005) at 37°C for 20 min; Incubation: Anti-EB3 Polyclonal Antibody, Unconjugated(bs-4275R) 1:200, overnight at 4°C, followed by conjugation to the secondary antibody(SP-0023) and DAB(C-0010) staining

SELECTED CITATIONS

- **[IF=4.8]** Wentao Hu. et al. Early B Cell Factor 3 (EBF3) attenuates Parkinson's disease through directly regulating contactin-associated protein-like 4 (CNTNAP4) transcription: An experimental study. CELL SIGNAL. 2024 Jun;118:111139 IF ;Mouse. 38479556