

bs-17186R**[Primary Antibody]****ITPRIP Rabbit pAb****BioSS**
ANTIBODIES

www.bioss.com.cn

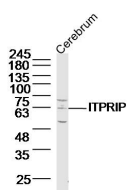
sales@bioss.com.cn

techsupport@bioss.com.cn

400-901-9800

— DATASHEET —

Host: Rabbit	Isotype: IgG	Applications: WB (1:500-2000)
Clonality: Polyclonal		Reactivity: Mouse (predicted: Human, Rat, Rabbit, Cow, Horse)
GeneID: 85450	SWISS: Q8IWB1	
Target: ITPRIP		Predicted MW.: 62 kDa
Immunogen: KLH conjugated synthetic peptide derived from human ITPRIP: 301-400/547.		Subcellular Location: Cell membrane
Purification: affinity purified by Protein A		
Concentration: 1mg/ml		
Storage: 0.01M TBS (pH7.4) with 1% BSA, 0.02% Proclin300 and 50% Glycerol. Shipped at 4°C. Store at -20°C for one year. Avoid repeated freeze/thaw cycles.		
Background: This gene encodes a membrane-associated protein that binds the inositol 1,4,5-trisphosphate receptor (IPTR). The encoded protein enhances the sensitivity of ITPR to intracellular calcium signaling. Alternative splicing results in multiple transcript variants. [provided by RefSeq, Dec 2012]		

— VALIDATION IMAGES —

Sample: Cerebrum (Mouse) Lysate at 40 ug
Primary: Anti-ITPRIP (bs-17186R) at 1/300
dilution Secondary: IRDye800CW Goat Anti-Rabbit IgG at 1/20000 dilution Predicted band size: 62 kD Observed band size: 62 kD