

**bs-10557R****[ Primary Antibody ]****GOT2 Rabbit pAb****BioSS**  
**ANTIBODIES**

www.bioss.com.cn

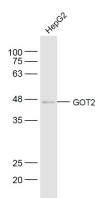
sales@bioss.com.cn

techsupport@bioss.com.cn

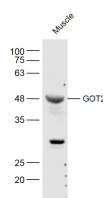
400-901-9800

**— DATASHEET —**

<b>Host:</b> Rabbit <b>Clonality:</b> Polyclonal <b>GeneID:</b> 2806 <b>Target:</b> GOT2 <b>Immunogen:</b> KLH conjugated synthetic peptide derived from human GOT2: 81-180/430. <b>Purification:</b> affinity purified by Protein A <b>Concentration:</b> 1mg/ml <b>Storage:</b> 0.01M TBS (pH7.4) with 1% BSA, 0.02% Proclin300 and 50% Glycerol. Shipped at 4°C. Store at -20°C for one year. Avoid repeated freeze/thaw cycles. <b>Background:</b> GOT2 [Glutamate oxaloacetate transaminase] is a ubiquitous pyridoxal phosphate dependent enzyme which exists in both mitochondrial and cytosolic forms. The enzyme plays an important role in amino acid metabolism and in the urea and tricarboxylic acid cycles. The 2 isoenzymes are homodimeric. In liver about 80% of the enzyme activity is mitochondrial in origin, whereas in serum the enzyme activity is largely cytosolic. Although the mitochondrial and soluble forms of GOT are coded by different chromosomes, the 2 show close homology in amino acid sequence and were presumably derived from a common ancestral gene. Serum GOT [with SGPT] levels are usually elevated in states of hepatocellular injury (injury to the liver cells), the highest levels are associated with hepatitis of a viral origin. High levels are also found after myocardial infarction, when SGPT levels are lower.	<b>Isotype:</b> IgG <b>SWISS:</b> P00505 <b>Applications:</b> WB (1:500-2000) <b>Reactivity:</b> Human, Mouse (predicted: Rat, Rabbit)  <b>Predicted MW.:</b> 45 kDa <b>Subcellular Location:</b> Cell membrane ,Cytoplasm
--	---

**— VALIDATION IMAGES —**

Sample: HepG2(Human) Cell Lysate at 30 ug  
Primary: Anti-GOT2 (bs-10557R) at 1/300 dilution  
Secondary: IRDye800CW Goat Anti-Rabbit IgG at 1/20000 dilution Predicted band size: 45 kD  
Observed band size: 45 kD



Sample: Muscle(Mouse) Lysate at 40 ug Primary:  
Anti-GOT2 (bs-10557R) at 1/300 dilution  
Secondary: IRDye800CW Goat Anti-Rabbit IgG at 1/20000 dilution Predicted band size: 45 kD  
Observed band size: 45 kD