

bs-10029R**[Primary Antibody]****Nectin 4 Rabbit pAb****BioSS**
ANTIBODIES

www.bioss.com.cn

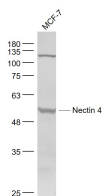
sales@bioss.com.cn

techsupport@bioss.com.cn

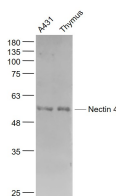
400-901-9800

— DATASHEET —

Host: Rabbit	Isotype: IgG	Applications: WB (1:500-2000)
Clonality: Polyclonal		Reactivity: Human, Mouse (predicted: Rat, Rabbit, Pig, Cow, Horse)
GeneID: 81607	SWISS: Q96NY8	Predicted MW.: 53 kDa
Target: Nectin 4		Subcellular Location: Secreted ,Cell membrane
Immunogen: KLH conjugated synthetic peptide derived from human Nectin 4: 151-250/510.		
Purification: affinity purified by Protein A		
Concentration: 1mg/ml		
Storage: 0.01M TBS (pH7.4) with 1% BSA, 0.02% Proclin300 and 50% Glycerol. Shipped at 4°C. Store at -20°C for one year. Avoid repeated freeze/thaw cycles.		
Background: This gene encodes a member of the nectin family. The encoded protein contains two immunoglobulin-like (Ig-like) C2-type domains and one Ig-like V-type domain. It is involved in cell adhesion through trans-homophilic and -heterophilic interactions. It is a single-pass type I membrane protein. The soluble form is produced by proteolytic cleavage at the cell surface by the metalloproteinase ADAM17/TACE. The secreted form is found in both breast tumor cell lines and breast tumor patients. Mutations in this gene are the cause of ectodermal dysplasia-syndactyly syndrome type 1, an autosomal recessive disorder. Alternatively spliced transcript variants have been found but the full-length nature of the variant has not been determined.		

— VALIDATION IMAGES —

Sample: MCF-7(Human) Cell Lysate at 30 ug
Primary: Anti- Nectin 4 (bs-10029R) at 1/1000
dilution Secondary: IRDye800CW Goat Anti-
Rabbit IgG at 1/20000 dilution Predicted band
size: 53 kD Observed band size: 55 kD



Sample: A431(Human) Cell Lysate at 30 ug
Thymus (Mouse) Lysate at 40 ug Primary: Anti-
Nectin 4 (bs-10029R) at 1/1000 dilution
Secondary: IRDye800CW Goat Anti-Rabbit IgG at
1/20000 dilution Predicted band size: 53 kD
Observed band size: 55 kD