

bs-17712R**[Primary Antibody]****MON1B/HSRG1 Rabbit pAb****Bioss**
ANTIBODIES

www.bioss.com.cn

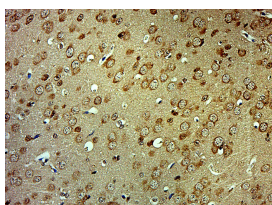
sales@bioss.com.cn

techsupport@bioss.com.cn

400-901-9800

— DATASHEET —

Host: Rabbit	Isotype: IgG	Applications: IHC-P (1:100-500) IHC-F (1:100-500) IF (1:100-500) Reactivity: Mouse (predicted: Human, Rat, Pig, Sheep, Cow, Dog, Horse) Predicted MW.: 59 kDa Subcellular Location: Cytoplasm
Clonality: Polyclonal		
GeneID: 22879	SWISS: Q7L1V2	
Target: MON1B/HSRG1		
Immunogen: KLH conjugated synthetic peptide derived from human MON1B/HSRG1: 401-500/547.		
Purification: affinity purified by Protein A		
Concentration: 1mg/ml		
Storage: 0.01M TBS (pH7.4) with 1% BSA, 0.02% Proclin300 and 50% Glycerol. Shipped at 4°C. Store at -20°C for one year. Avoid repeated freeze/thaw cycles.		
Background: MON1B (MON1 Homolog B, Secretory Trafficking Associated) is a Protein Coding gene. An important paralog of this gene is MON1A.		

— VALIDATION IMAGES —

Paraformaldehyde-fixed, paraffin embedded (Mouse brain); Antigen retrieval by boiling in sodium citrate buffer (pH6.0) for 15min; Block endogenous peroxidase by 3% hydrogen peroxide for 20 minutes; Blocking buffer (normal goat serum) at 37°C for 30min; Antibody incubation with (MON1B) Polyclonal Antibody, Unconjugated (bs-17712R) at 1:500 overnight at 4°C, followed by a conjugated secondary (sp-0023) for 20 minutes and DAB staining.