

bs-17711R**[Primary Antibody]****MON1A Rabbit pAb****Bioss**
ANTIBODIES

www.bioss.com.cn

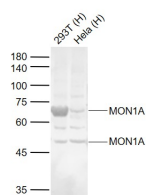
sales@bioss.com.cn

techsupport@bioss.com.cn

400-901-9800

— DATASHEET —

Host: Rabbit	Isotype: IgG	Applications: WB (1:500-2000)
Clonality: Polyclonal		Reactivity: Human, Mouse (predicted: Rat, Rabbit, Pig, Sheep, Cow, Horse, Plants, Cynomolgus Monkey)
GeneID: 84315	SWISS: Q86VX9	Predicted MW.: 62 kDa
Target: MON1A		Subcellular Location: Cytoplasm
Immunogen: KLH conjugated synthetic peptide derived from human MON1A: 51-150/555.		
Purification: affinity purified by Protein A		
Concentration: 1mg/ml		
Storage: 0.01M TBS (pH7.4) with 1% BSA, 0.02% Proclin300 and 50% Glycerol. Shipped at 4°C. Store at -20°C for one year. Avoid repeated freeze/thaw cycles.		
Background: MON1A is a 555 amino acid protein that exists as multiple alternatively spliced isoforms and plays an important role in membrane trafficking, specifically through the secretory apparatus. The gene encoding MON1A maps to human chromosome 3, which houses over 1,100 genes, including a chemokine receptor (CKR) gene cluster and a variety of human cancer-related gene loci. Key tumor suppressing genes on chromosome 3 include those that encode the apoptosis mediator RASSF1, the cell migration regulator HYAL1 and the angiogenesis suppressor SEMA3B. Marfan Syndrome, porphyria, von Hippel-Lindau syndrome, osteogenesis imperfecta and Charcot-Marie-Tooth Disease are a few of the numerous genetic diseases associated with chromosome 3.		

— VALIDATION IMAGES —

Sample: Lane 1: 293T (Human) Cell Lysate at 30 ug
Lane 2: Hela (Human) Cell Lysate at 30 ug
Primary: Anti-MON1A (bs-17711R) at 1/1000 dilution
Secondary: IRDye800CW Goat Anti-Rabbit IgG at 1/20000 dilution
Predicted band size: 70/55 kD
Observed band size: 70/50 kD