

**bs-16988R**

**[ Primary Antibody ]**

## KIAA1045 Rabbit pAb

**BioSS**  
ANTIBODIES

www.bioss.com.cn

sales@bioss.com.cn

techsupport@bioss.com.cn

400-901-9800

### — DATASHEET —

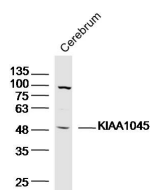
<b>Host:</b> Rabbit	<b>Isotype:</b> IgG
<b>Clonality:</b> Polyclonal	
<b>GeneID:</b> 23349	<b>SWISS:</b> Q9UPV7
<b>Target:</b> KIAA1045	
<b>Immunogen:</b> KLH conjugated synthetic peptide derived from human KIAA1045: 51-150/400.	
<b>Purification:</b> affinity purified by Protein A	
<b>Concentration:</b> 1mg/ml	
<b>Storage:</b> 0.01M TBS (pH7.4) with 1% BSA, 0.02% Proclin300 and 50% Glycerol. Shipped at 4°C. Store at -20°C for one year. Avoid repeated freeze/thaw cycles.	
<b>Background:</b> KIAA1045 is a 400 amino acid protein that contains one PHD-type zinc finger. The gene encoding KIAA1045 maps to human chromosome 9p13.3. Chromosome 9 houses over 900 genes and comprises nearly 4% of the human genome. Considered to play a role in gender determination, deletion of the distal portion of chromosome 9p can lead to development of male to female sex reversal, the phenotype of a female with a male XY genotype. Hereditary hemorrhagic telangiectasia, which is characterized by harmful vascular defects, is associated with the chromosome 9 gene encoding endoglin protein, ENG. Familial dysautonomia is also associated with chromosome 9 through the gene IKBKAP. Notably, chromosome 9 encompasses the largest interferon family gene cluster. Chromosome 9 is partnered with chromosome 22 in the translocation leading to the aberrant production of a BCR-ABL fusion protein often found in leukemias.	

**Applications:** WB (1:500-2000)

**Reactivity:** Mouse  
(predicted: Human,  
Rat, Sheep, Horse)

**Predicted  
MW.:** 45 kDa

### — VALIDATION IMAGES —



Sample: Cerebrum (Mouse) Lysate at 40 ug  
Primary: Anti-KIAA1045(bs-16988R) at 1/300  
dilution Secondary: IRDye800CW Goat Anti-  
RabbitIgG at 1/20000 dilution Predicted band  
size: 45kD Observed band size: 45kD