

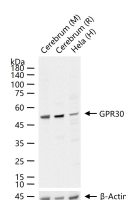
**bs-1380R****[ Primary Antibody ]****GPR30 Rabbit pAb****Bioss**  
**ANTIBODIES**

www.bioss.com.cn

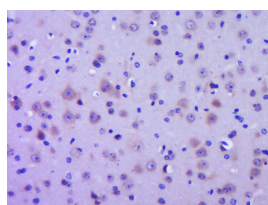
sales@bioss.com.cn

techsupport@bioss.com.cn

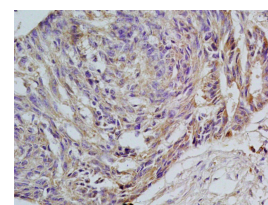
400-901-9800

**DATASHEET****Host:** Rabbit**Isotype:** IgG**Clonality:** Polyclonal**GeneID:** 2852**SWISS:** Q99527**Target:** GPR30**Immunogen:** KLH conjugated synthetic peptide derived from human GPR30: 251-375/375. < Cytoplasmic >**Purification:** affinity purified by Protein A**Concentration:** 1mg/ml**Storage:** 0.01M TBS (pH7.4) with 1% BSA, 0.02% Proclin300 and 50% Glycerol.  
Shipped at 4°C. Store at -20°C for one year. Avoid repeated freeze/thaw cycles.**Background:** This gene is a member of the G-protein coupled receptor 1 family and encodes a multi-pass membrane protein that localizes to the endoplasmic reticulum. The protein binds estrogen, resulting in intracellular calcium mobilization and synthesis of phosphatidylinositol 3,4,5-trisphosphate in the nucleus. This protein therefore plays a role in the rapid nongenomic signaling events widely observed following stimulation of cells and tissues with estrogen. Alternate transcriptional splice variants which encode the same protein have been characterized. [provided by RefSeq, Jul 2008]**Applications:** WB (1:500-2000)**IHC-P** (1:100-500)**IHC-F** (1:100-500)**IF** (1:100-500)**Flow-Cyt** (1µg/Test)**ICC/IF** (1:100)**Reactivity:** Human, Mouse, Rat  
(predicted: Dog)**Predicted  
MW.:** 42 kDa**Subcellular  
Location:** Cell membrane**VALIDATION IMAGES**

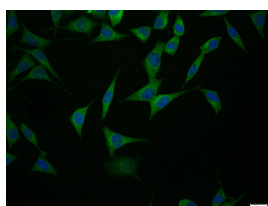
25 µg total protein per lane of various lysates (see on figure) probed with GPR30 polyclonal antibody, unconjugated (bs-1380R) at 1:1000 dilution and 4°C overnight incubation. Followed by conjugated secondary antibody incubation at r.t. for 60 min.



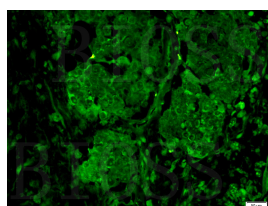
Paraformaldehyde-fixed, paraffin embedded (Mouse brain); Antigen retrieval by boiling in sodium citrate buffer (pH6.0) for 15min; Block endogenous peroxidase by 3% hydrogen peroxide for 20 minutes; Blocking buffer (normal goat serum) at 37°C for 30min; Antibody incubation with (GPR30) Polyclonal Antibody, Unconjugated (bs-1380R) at 1:400 overnight at 4°C, followed by operating according to SP Kit(Rabbit) (sp-0023) instructions and DAB staining.



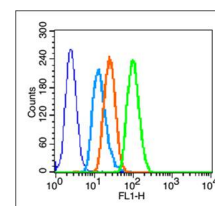
Tissue/cell: human rectal carcinoma; 4% Paraformaldehyde-fixed and paraffin-embedded; Antigen retrieval: citrate buffer (0.01M, pH 6.0), Boiling bathing for 15min; Block endogenous peroxidase by 3% Hydrogen peroxide for 30min; Blocking buffer (normal goat serum, C-0005) at 37°C for 20 min; Incubation: Anti-GPR30 Polyclonal Antibody, Unconjugated(bs-1380R) 1:200, overnight at 4°C, followed by conjugation to the secondary antibody(SP-0023) and DAB(C-0010) staining



Tissue/cell: SH-SY5Y cell; 4% Paraformaldehyde-fixed; Triton X-100 at room temperature for 20 min; Blocking buffer (normal goat serum, C-0005) at 37°C for 20 min; Antibody incubation with



Tissue/cell: human colon carcinoma; 4% Paraformaldehyde-fixed and paraffin-embedded; Antigen retrieval: citrate buffer (0.01M, pH 6.0), Boiling bathing for 15min;

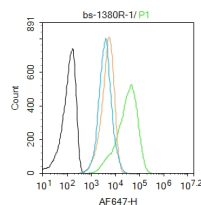
Blank control (blue line): A431 cells (blue).  
Primary Antibody (green line): Rabbit Anti-GPR30 antibody (bs-1380R) Dilution: 1µg / 10<sup>6</sup> cells;  
Isotype Control Antibody (orange line): Rabbit

Important Note: This product as supplied is intended for research use only, not for use in human, therapeutic or diagnostic applications.

(GPR30) polyclonal Antibody, Unconjugated (bs-1380R) 1:100, 90 minutes at 37°C; followed by a FITC conjugated Goat Anti-Rabbit IgG antibody at 37°C for 90 minutes, DAPI (blue, C02-04002) was used to stain the cell nuclei.

Blocking buffer (normal goat serum, C-0005) at 37°C for 20 min; Incubation: Anti-GPR30 Polyclonal Antibody, Unconjugated (bs-R) 1:200, overnight at 4°C; The secondary antibody was Goat Anti-Rabbit IgG, Cy3 conjugated (bs-0295G-Cy3) used at 1:200 dilution for 40 minutes at 37°C.

IgG . Secondary Antibody (white blue line): Goat anti-rabbit IgG-FITC Dilution: 1µg /test. Protocol The cells were fixed with 70% methanol (Overnight at 4°C) and then permeabilized with 90% ice-cold methanol for 20 min at -20°C. Cells stained with Primary Antibody for 30 min at room temperature. The cells were then incubated in 1 X PBS/2%BSA/10% goat serum to block non-specific protein-protein interactions followed by the antibody for 15 min at room temperature. The secondary antibody used for 40 min at room temperature. Acquisition of 20,000 events was performed.



Blank control: HepG2. Primary Antibody (green line): Rabbit Anti-GPR30 antibody (bs-1380R) Dilution: 1µg /10<sup>6</sup> cells; Isotype Control Antibody (orange line): Rabbit IgG . Secondary Antibody : Goat anti-rabbit IgG-AF647 Dilution: 1µg /test. Protocol The cells were fixed with 4% PFA (10min at room temperature) and then permeabilized with 0.1% PBST for 20 min at room temperature. The cells were then incubated in 5%BSA to block non-specific protein-protein interactions for 30 min at room temperature. Cells stained with Primary Antibody for 30 min at room temperature. The secondary antibody used for 40 min at room temperature. Acquisition of 20,000 events was performed.

## — SELECTED CITATIONS —

- **[IF=11.1]** Nie Jichan. et al. Progressively diminished estrogen signaling concordant with increased fibrosis in ectopic endometrium. Human Reproduction Open. 2025 May;2025(3): IHC,WB ;Human. 40521103
- **[IF=7.129]** Qianfeng Liu. et al. Perfluoroalkyl substances promote breast cancer progression via ERα and GPER mediated PI3K/Akt and MAPK/Erk signaling pathways. ECOTOX ENVIRON SAFE. 2023 Jun;258:114980 WB ;Human. 37148752
- **[IF=5.6]** Zihao Fang. et al. 17β-Estradiol mediates TGFBR3/Smad2/3 signaling to attenuate the fibrosis of TGF-β1-induced bovine endometrial epithelial cells via GPER. J CELL PHYSIOL. 2023 Nov;; WB,IHC ;Bovine. 37991438
- **[IF=4.8]** Lixia Chen. et al. Activation of GPER1 by G1 prevents PTSD-like behaviors in mice: Illustrating the mechanisms from BDNF/TrkB to mitochondria and synaptic connection. CNS NEUROSCI THER. 2024 Jul;30(7):e14855 WB ;Mouse. 38992889
- **[IF=3.75]** Andressa S. Sousa. et al. Evaluation of coronary function in female rats with severe type 1 diabetes: Effects of combined treatment with insulin and pyridoxamine. MICROVASC RES. 2022 Dec;;104474 WB ;Rat. 36592817