

**bs-0409R****[ Primary Antibody ]****BioSS**  
**ANTIBODIES**

www.bioss.com.cn

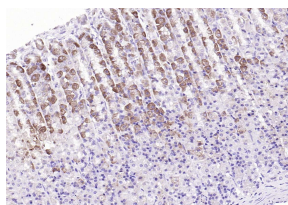
sales@bioss.com.cn

techsupport@bioss.com.cn

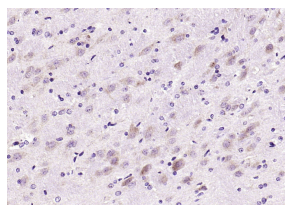
400-901-9800

**Leptin Rabbit pAb****— DATASHEET —**

<b>Host:</b> Rabbit	<b>Isotype:</b> IgG	<b>Applications:</b> IHC-P (1:100-500)
<b>Clonality:</b> Polyclonal		<b>IHC-F</b> (1:100-500)
<b>GeneID:</b> 3952	<b>SWISS:</b> P41159	<b>IF</b> (1:100-500)
<b>Target:</b> Leptin		<b>Reactivity:</b> Human, Mouse, Rat (predicted: Pig, Sheep)
<b>Immunogen:</b> KLH conjugated synthetic peptide derived from human Leptin: 17-100/167.		
<b>Purification:</b> affinity purified by Protein A		<b>Predicted MW.:</b> 16 kDa
<b>Concentration:</b> 1mg/ml		<b>Subcellular Location:</b> Secreted
<b>Storage:</b> 0.01M TBS (pH7.4) with 1% BSA, 0.02% Proclin300 and 50% Glycerol. Shipped at 4°C. Store at -20°C for one year. Avoid repeated freeze/thaw cycles.		
<b>Background:</b> Leptin, the product of the ob (obese) gene, is a 16kD protein consisting of 146 amino acid residues. Leptin is produced in the adipose tissue, and is considered to play an important role in appetite control, fat metabolism and regulation of body weight. It targets the central nervous system, particularly hypothalamus, affecting food intake. Leptin levels are high in most obese individuals. Studies have shown that it may also influence reproductive function.		

**— VALIDATION IMAGES —**

Paraformaldehyde-fixed, paraffin embedded (rat stomach); Antigen retrieval by boiling in sodium citrate buffer (pH6.0) for 15min; Block endogenous peroxidase by 3% hydrogen peroxide for 20 minutes; Blocking buffer (normal goat serum) at 37°C for 30min; Antibody incubation with (Leptin) Polyclonal Antibody, Unconjugated (bs-0409R) at 1:2000 overnight at 4°C, followed by operating according to SP Kit(Rabbit) (sp-0023) instructions and DAB staining.



Paraformaldehyde-fixed, paraffin embedded (rat brain); Antigen retrieval by boiling in sodium citrate buffer (pH6.0) for 15min; Block endogenous peroxidase by 3% hydrogen peroxide for 20 minutes; Blocking buffer (normal goat serum) at 37°C for 30min; Antibody incubation with (Leptin) Polyclonal Antibody, Unconjugated (bs-0409R) at 1:200 overnight at 4°C, followed by operating according to SP Kit(Rabbit) (sp-0023) instructions and DAB staining.

**— SELECTED CITATIONS —**

- **[IF=6.081]** Michelotti Tainara C.. et al. Single-nuclei analysis reveals depot-specific transcriptional heterogeneity and depot-specific cell types in adipose tissue of dairy cows. FRONT CELL DEV BIOL. 2022 Oct;0:2076 IF ;Bovine. 36313560
- **[IF=6.376]** Pan Jianping. et al. Hypolipidemic effect of ethanol extract from Chimonanthus nitens Oliv. leaves in hyperlipidemia rats via activation of the leptin/JAK2/STAT3 pathway. MOL MED. 2022 Dec;28(1):1-12 WB ;Rat. 36539694
- **[IF=5.923]** Kimberly A. Clark. et al. Evaluation of the Central Effects of Systemic Lentiviral-Mediated Leptin Delivery in Streptozotocin-Induced Diabetic Rats. Int J Mol Sci. 2021 Jan;22(24):13197 IHC ;Rat. 34947993
- **[IF=5.3]** Xin Cao. et al. Alleviation of temporomandibular joint osteoarthritis by targeting RIPK1-mediated inflammatory

Important Note: This product as supplied is intended for research use only, not for use in human, therapeutic or diagnostic applications.

signalling. JOURNAL OF CELLULAR AND MOLECULAR MEDICINE. 2023 Aug:: IHC ;Rat. 37643315

- **[IF=4.6]** Wang Jianan. et al. Association of attenuated leptin signaling pathways with impaired cardiac function under prolonged high-altitude hypoxia. SCI REP-UK. 2024 May;14(1):1-18 WB,IHC ;Rat. 38702334