

**bs-18514R****[ Primary Antibody ]****ZNF622 Rabbit pAb****BioSS**  
**ANTIBODIES**

www.bioss.com.cn

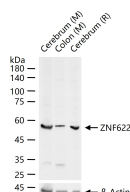
sales@bioss.com.cn

techsupport@bioss.com.cn

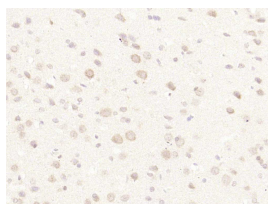
400-901-9800

**— DATASHEET —**

<b>Host:</b> Rabbit	<b>Isotype:</b> IgG	<b>Applications:</b> <b>WB</b> (1:500-2000)
<b>Clonality:</b> Polyclonal		<b>IHC-P</b> (1:100-500)
<b>GeneID:</b> 90441	<b>SWISS:</b> Q969S3	<b>IHC-F</b> (1:100-500)
<b>Target:</b> ZNF622		<b>IF</b> (1:100-500)
<b>Immunogen:</b> KLH conjugated synthetic peptide derived from human ZNF622: 1-100/477.		<b>Reactivity:</b> Mouse, Rat (predicted: Human, Rabbit, Sheep, Cow, Horse)
<b>Purification:</b> affinity purified by Protein A		
<b>Concentration:</b> 1mg/ml		<b>Predicted MW.:</b> 54 kDa
<b>Storage:</b> 0.01M TBS (pH7.4) with 1% BSA, 0.02% Proclin300 and 50% Glycerol. Shipped at 4°C. Store at -20°C for one year. Avoid repeated freeze/thaw cycles.		<b>Subcellular Location:</b> Cytoplasm ,Nucleus
<b>Background:</b> ZNF622 (Zinc Finger Protein 622) is a Protein Coding gene. Diseases associated with ZNF622 include Autosomal Dominant Non-Syndromic Intellectual Disability 44 and Autoinflammation, Panniculitis, And Dermatitis Syndrome. Gene Ontology (GO) annotations related to this gene include nucleic acid binding.		

**— VALIDATION IMAGES —**

25 ug total protein per lane of various lysates (see on figure) probed with ZNF622 polyclonal antibody, unconjugated (bs-18514R) at 1:1000 dilution and 4°C overnight incubation. Followed by conjugated secondary antibody incubation at r.t. for 60 min.



Paraformaldehyde-fixed, paraffin embedded (rat brain); Antigen retrieval by boiling in sodium citrate buffer (pH6.0) for 15min; Block endogenous peroxidase by 3% hydrogen peroxide for 20 minutes; Blocking buffer (normal goat serum) at 37°C for 30min; Antibody incubation with (ZNF622) Polyclonal Antibody, Unconjugated (bs-18514R) at 1:200 overnight at 4°C, followed by operating according to SP Kit(Rabbit) (sp-0023) instructions and DAB staining.