

bs-18512R**[Primary Antibody]****ZNF642 Rabbit pAb****Bioss**
ANTIBODIES

www.bioss.com.cn

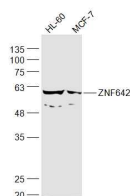
sales@bioss.com.cn

techsupport@bioss.com.cn

400-901-9800

— DATASHEET —

Host: Rabbit	Isotype: IgG	Applications: WB (1:500-2000)
Clonality: Polyclonal		Reactivity: Human
GeneID: 339559	SWISS: Q49AA0	
Target: ZNF642		
Immunogen: KLH conjugated synthetic peptide derived from human ZNF642: 1-100/526.		Predicted MW.: 61 kDa
Purification: affinity purified by Protein A		Subcellular Location: Nucleus
Concentration: 1mg/ml		
Storage: 0.01M TBS (pH7.4) with 1% BSA, 0.02% Proclin300 and 50% Glycerol. Shipped at 4°C. Store at -20°C for one year. Avoid repeated freeze/thaw cycles.		
Background: ZFP69 (ZFP69 Zinc Finger Protein) is a Protein Coding gene. Among its related pathways are Gene Expression and Herpes simplex virus 1 infection. Gene Ontology (GO) annotations related to this gene include nucleic acid binding. An important paralog of this gene is ZFP69B.		

— VALIDATION IMAGES —

Sample: HL-60(Human) Cell Lysate at 30 ug
MCF-7(Human) Cell Lysate at 30 ug Primary:
Anti-ZNF642 (bs-18512R) at 1/300 dilution
Secondary: IRDye800CW Goat Anti-Rabbit IgG at
1/20000 dilution Predicted band size: 61 kD
Observed band size: 61 kD