

bs-18510R**[Primary Antibody]****ZNF366 Rabbit pAb****Bioss**
ANTIBODIES

www.bioss.com.cn

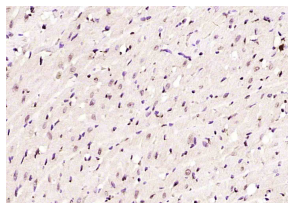
sales@bioss.com.cn

techsupport@bioss.com.cn

400-901-9800

— DATASHEET —

Host: Rabbit	Isotype: IgG	Applications: IHC-P (1:100-500)
Clonality: Polyclonal		IHC-F (1:100-500)
GeneID: 167465	SWISS: Q8N895	IF (1:100-500)
Target: ZNF366		
Immunogen: KLH conjugated synthetic peptide derived from human ZNF366: 501-600/744.		
Purification: affinity purified by Protein A		Reactivity: Rat (predicted: Human, Mouse, Rabbit, Sheep, Cow, Chicken, Dog, Horse)
Concentration: 1mg/ml		
Storage: 0.01M TBS (pH7.4) with 1% BSA, 0.02% Proclin300 and 50% Glycerol. Shipped at 4°C. Store at -20°C for one year. Avoid repeated freeze/thaw cycles.		Predicted MW.: 85 kDa
Background: ZNF366 is a 744 amino acid nuclear protein that contains eleven C2H2-type zinc fingers and is thought to function in transcriptional regulation. The gene encoding ZNF366 maps to human chromosome 5, which contains 181 million base pairs and comprises nearly 6% of the human genome. Deletion of the p arm of chromosome 5 leads to Cri du chat syndrome, while deletion of the q arm of chromosome 5 altogether is common in therapy-related acute myelogenous leukemias and myelodysplastic syndrome.		Subcellular Location: Nucleus

— VALIDATION IMAGES —

Paraformaldehyde-fixed, paraffin embedded (rat heart); Antigen retrieval by boiling in sodium citrate buffer (pH6.0) for 15min; Block endogenous peroxidase by 3% hydrogen peroxide for 20 minutes; Blocking buffer (normal goat serum) at 37°C for 30min; Antibody incubation with (ZNF366) Polyclonal Antibody, Unconjugated (bs-18510R) at 1:200 overnight at 4°C, followed by operating according to SP Kit(Rabbit) (sp-0023) instructions and DAB staining.