

bs-18508R**[Primary Antibody]****ZNF24 Rabbit pAb****BioSS**
ANTIBODIES

www.bioss.com.cn

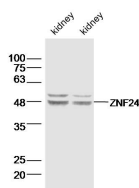
sales@bioss.com.cn

techsupport@bioss.com.cn

400-901-9800

— DATASHEET —

Host: Rabbit	Isotype: IgG	Applications: WB (1:500-2000)
Clonality: Polyclonal		Reactivity: Mouse (predicted: Human, Rat, Pig, Sheep, Cow, Dog, Horse, Chimpanzee, Cynomolgus Monkey, Rhesus monkey, Gorilla, Orangutan)
GeneID: 7572	SWISS: P17028	Predicted MW.: 42 kDa
Target: ZNF24		Subcellular Location: Nucleus
Immunogen: KLH conjugated synthetic peptide derived from human ZNF24: 201-300/368.		
Purification: affinity purified by Protein A		
Concentration: 1mg/ml		
Storage: 0.01M TBS (pH7.4) with 1% BSA, 0.02% Proclin300 and 50% Glycerol. Shipped at 4°C. Store at -20°C for one year. Avoid repeated freeze/thaw cycles.		
Background: ZNF24 may function as a transcription factor and acts as a transrepressor in mammalian cell lines. This protein is expressed in many tissues except in heart.		

— VALIDATION IMAGES —

Sample: Kidney (Mouse) Lysate at 40 ug
(Mouse) Lysate at 40 ug Primary: Anti-ZNF24
(bs-18508/R) at 1/500 dilution
Anti-ZNF24 (bs-18508/R) at 1/1000 dilution
Secondary: IRDye800CW Goat Anti-Rabbit IgG at 1/20000 dilution
Predicted band size: 24 kD
Observed band size: 24 kD