

**bs-18507R**

**[ Primary Antibody ]**

## ZNF232 Rabbit pAb

**BioSS**  
ANTIBODIES

www.bioss.com.cn

sales@bioss.com.cn

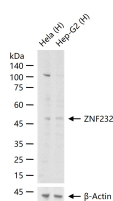
techsupport@bioss.com.cn

400-901-9800

### — DATASHEET —

<b>Host:</b> Rabbit	<b>Isotype:</b> IgG	<b>Applications:</b> WB (1:500-2000)
<b>Clonality:</b> Polyclonal		<b>Reactivity:</b> Human (predicted: Spider Monkey)
<b>GeneID:</b> 7775	<b>SWISS:</b> Q9UNY5	
<b>Target:</b> ZNF232		
<b>Immunogen:</b> KLH conjugated synthetic peptide derived from human ZNF232: 131-230/417.		<b>Predicted MW.:</b> 51 kDa
<b>Purification:</b> affinity purified by Protein A		<b>Subcellular Location:</b> Nucleus
<b>Concentration:</b> 1mg/ml		
<b>Storage:</b> 0.01M TBS (pH7.4) with 1% BSA, 0.02% Proclin300 and 50% Glycerol. Shipped at 4°C. Store at -20°C for one year. Avoid repeated freeze/thaw cycles.		

### — VALIDATION IMAGES —



25 ug total protein per lane of various lysates (see on figure) probed with ZNF232 polyclonal antibody, unconjugated (bs-18507R) at 1:1000 dilution and 4°C overnight incubation. Followed by conjugated secondary antibody incubation at r.t. for 60 min.