
SOX2 Rabbit pAb

Catalog Number: bs-23177R

Target Protein: SOX2

Concentration: 1mg/ml

Form: Liquid

Host: Rabbit

Clonality: Polyclonal

Isotype: IgG

Applications: WB (1:500-2000)

Reactivity: Human, Mouse, Rat (predicted: Sheep, Cow, Chicken, Dog, Horse)

Predicted MW: 34 kDa

Entrez Gene: 6657

Swiss Prot: P48431

Source: KLH conjugated synthetic peptide derived from human SOX2: 221-317/317.

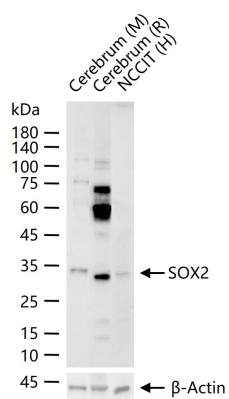
Purification: affinity purified by Protein A

Storage: 0.01M TBS (pH7.4) with 1% BSA, 0.02% Proclin300 and 50% Glycerol.

Shipped at 4°C. Store at -20°C for one year. Avoid repeated freeze/thaw cycles.

Background: This intronless gene encodes a member of the SRY-related HMG-box (SOX) family of transcription factors involved in the regulation of embryonic development and in the determination of cell fate. The product of this gene is required for stem-cell maintenance in the central nervous system, and also regulates gene expression in the stomach. Mutations in this gene have been associated with optic nerve hypoplasia and with syndromic microphthalmia, a severe form of structural eye malformation. This gene lies within an intron of another gene called SOX2 overlapping transcript (SOX2OT). [provided by RefSeq, Jul 2008].

VALIDATION IMAGES



25 ug total protein per lane of various lysates (see on figure) probed with SOX2 polyclonal antibody, unconjugated (bs-23177R) at 1:1000 dilution and 4°C overnight incubation. Followed by conjugated secondary antibody incubation at r.t. for 60 min.

PRODUCT SPECIFIC PUBLICATIONS

[IF=6.684] Yao Jiang. et al. Atlas of Prenatal Hair Follicle Morphogenesis Using the Pig as a Model System. Front Cell Dev Biol. 2021; 9: 721979 IF ; Pig . 34692680