
CXCL5 Rabbit pAb

Catalog Number: bs-2549R

Target Protein: CXCL5

Concentration: 1mg/ml

Form: Liquid

Host: Rabbit

Clonality: Polyclonal

Isotype: IgG

Applications: IHC-P (1:100-500), IHC-F (1:100-500), IF (1:100-500)

Reactivity: Rat (predicted:Mouse)

Predicted MW: 8/9 kDa

Subcellular: Secreted

Locations:

Entrez Gene: 20311

Swiss Prot: P50228

Source: KLH conjugated synthetic peptide derived from mouse CXCL5: 51-132/132.

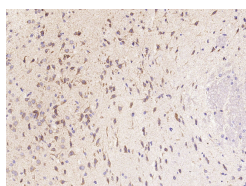
Purification: affinity purified by Protein A

Storage: 0.01M TBS (pH7.4) with 1% BSA, 0.02% Proclin300 and 50% Glycerol.

Shipped at 4°C. Store at -20°C for one year. Avoid repeated freeze/thaw cycles.

Background: The protein encoded by this gene is an inflammatory chemokine that belongs to the CXC chemokine family. This chemokine is produced concomitantly with interleukin-8 (IL8) in response to stimulation with either interleukin-1 (IL1) or tumor necrosis factor-alpha (TNFA). This chemokine is a potent chemotaxin involved in neutrophil activation. [provided by RefSeq].

VALIDATION IMAGES



Paraformaldehyde-fixed, paraffin embedded (Rat brain); Antigen retrieval by microwave in sodium citrate buffer (pH6.0) ; Block endogenous peroxidase by 3% hydrogen peroxide for 30 minutes; Blocking buffer (3% BSA) at RT for 30min; Antibody incubation with (CXCL5) Polyclonal Antibody, Unconjugated (bs-2549R) at 1:400 overnight at 4°C, followed by conjugation to the secondary antibody (labeled with HRP) and DAB staining.

PRODUCT SPECIFIC PUBLICATIONS

[IF=21.95] Shi L et al. A Self - Pumping Dressing for Draining Excessive Biofluid around Wounds. Adv Mater. 2019 Feb;31(5):e1804187. IHC ; Rat . 30537340

[IF=20.011] Wang G et al. Targeting YAP-Dependent MDSC Infiltration Impairs Tumor Progression. (2016) Cancer.Disco. 6:80-95 IHC ; Mouse . 26701088

[IF=13] Saito Yohei. et al. Targeting a chemo-induced adaptive signaling circuit confers therapeutic vulnerabilities in pancreatic cancer. CELL DISCOV. 2024 Oct;10(1):1-20 WB,IHC ; Mouse,Human . 39468013

[IF=10.753] Xin Ge. et al. Epigenetic alterations of CXCL5 in Cr(VI)-induced carcinogenesis. SCI TOTAL ENVIRON. 2022 Jun;;155713 IHC ; Mouse . 35660107

[IF=9.995] Qicong Luo. et al. Apatinib remodels the immunosuppressive tumor ecosystem of gastric cancer enhancing anti-PD-1 immunotherapy. CELL REP. 2023 Apr 24;42(5):112437 IHC ; Mouse . 37097818