

bs-17160R**[Primary Antibody]****TP53INP2 Rabbit pAb****Bioss**
ANTIBODIES

www.bioss.com.cn

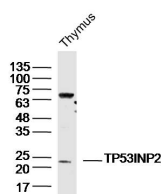
sales@bioss.com.cn

techsupport@bioss.com.cn

400-901-9800

— DATASHEET —

Host: Rabbit	Isotype: IgG	Applications: WB (1:500-2000)
Clonality: Polyclonal		Reactivity: Mouse, Rat (predicted: Human)
GeneID: 58476	SWISS: Q8IXH6	
Target: TP53INP2		Predicted MW.: 24 kDa
Immunogen: KLH conjugated synthetic peptide derived from human TP53INP2: 101-200/220.		Subcellular Location: Nucleus
Purification: affinity purified by Protein A		
Concentration: 1mg/ml		
Storage: 0.01M TBS (pH7.4) with 1% BSA, 0.02% Proclin300 and 50% Glycerol. Shipped at 4°C. Store at -20°C for one year. Avoid repeated freeze/thaw cycles.		

— VALIDATION IMAGES —

Sample:Thymus (Mouse)Lysate at 40 ug Primary:
Anti-TP53INP2(bs-17160R)at 1/300 dilution
Secondary: IRDye800CW Goat Anti-RabbitIgG at
1/20000 dilution Predicted band size: 24kD
Observed band size: 24kD