

bs-2712R**[Primary Antibody]****KCNC4 Rabbit pAb****Bioss**
ANTIBODIES

www.bioss.com.cn

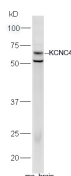
sales@bioss.com.cn

techsupport@bioss.com.cn

400-901-9800

— DATASHEET —

Host: Rabbit	Isotype: IgG	Applications: WB (1:500-2000)
Clonality: Polyclonal		Reactivity: Mouse (predicted: Human, Rat, Rabbit, Pig, Cow, Dog, Horse)
GeneID: 3749	SWISS: Q03721	Predicted MW.: 70 kDa
Target: KCNC4		Subcellular Location: Cell membrane
Immunogen: KLH conjugated synthetic peptide derived from human KCNC4: 301-400/635. < Extracellular >		
Purification: affinity purified by Protein A		
Concentration: 1mg/ml		
Storage: 0.01M TBS (pH7.4) with 1% BSA, 0.02% Proclin300 and 50% Glycerol. Shipped at 4°C. Store at -20°C for one year. Avoid repeated freeze/thaw cycles.		
Background: The Shaker gene family of Drosophila encodes components of voltage-gated potassium channels and is comprised of four subfamilies. Based on sequence similarity, this gene is similar to the Shaw subfamily. The protein encoded by this gene belongs to the delayed rectifier class of channel proteins and is an integral membrane protein that mediates the voltage-dependent potassium ion permeability of excitable membranes. It generates atypical voltage-dependent transient current that may be important for neuronal excitability. Multiple transcript variants have been found for this gene. [provided by RefSeq, Jul 2010].		

— VALIDATION IMAGES —

Sample: Brain(Mouse) lysate at 30ug; Primary:
Anti-KCNC4 (bs-2712R) at 1:300 dilution;
Secondary: HRP conjugated Goat-Anti-rabbit
IgG(bs-0295G-HRP) at 1: 5000 dilution; Predicted
band size: 70 kD Observed band size: 70 kD