

bs-4660R**[Primary Antibody]****phospho-MARK4 (Ser423) Rabbit pAb****Bioss**
ANTIBODIES

www.bioss.com.cn

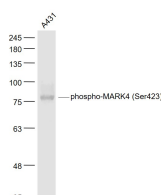
sales@bioss.com.cn

techsupport@bioss.com.cn

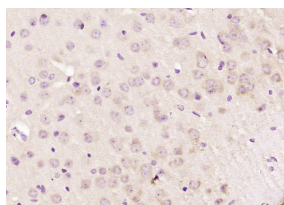
400-901-9800

— DATASHEET —

Host: Rabbit	Isotype: IgG	Applications: WB (1:500-2000)
Clonality: Polyclonal		IHC-P (1:100-500)
GeneID: 57787	SWISS: Q96L34	IHC-F (1:100-500)
Target: MARK4 (Ser423)		IF (1:100-500)
Immunogen: KLH conjugated synthesised phosphopeptide derived from human MARK4 around the phosphorylation site of Ser423 : RH(p-S)DF.		Reactivity: Human, Mouse (predicted: Rat, Cow, Dog, Horse)
Purification: affinity purified by Protein A		Predicted MW.: 75 kDa
Concentration: 1mg/ml		Subcellular Location: Cytoplasm
Storage: 0.01M TBS (pH7.4) with 1% BSA, 0.02% Proclin300 and 50% Glycerol. Shipped at 4°C. Store at -20°C for one year. Avoid repeated freeze/thaw cycles.		
Background: This gene encodes a member of the microtubule affinity-regulating kinase family. These protein kinases phosphorylate microtubule-associated proteins and regulate the transition between stable and dynamic microtubules. The encoded protein is associated with the centrosome throughout mitosis and may be involved in cell cycle control. Expression of this gene is a potential marker for cancer, and the encoded protein may also play a role in Alzheimer's disease. Pseudogenes of this gene are located on both the short and long arm of chromosome 3. Alternatively spliced transcript variants encoding multiple isoforms have been observed for this gene. [provided by RefSeq, Dec 2010].		

— VALIDATION IMAGES —

Sample: A431(Human) Cell Lysate at 30 ug
 Primary: Anti- phospho-MARK4 (Ser423)
 (bs-4660R) at 1/1000 dilution Secondary:
 IRDye800CW Goat Anti-Rabbit IgG at 1/20000
 dilution Predicted band size: 75 kD Observed
 band size: 77 kD



Paraformaldehyde-fixed, paraffin embedded
 (mouse brain); Antigen retrieval by boiling in
 sodium citrate buffer (pH6.0) for 15min; Block
 endogenous peroxidase by 3% hydrogen
 peroxide for 20 minutes; Blocking buffer (normal
 goat serum) at 37°C for 30min; Antibody
 incubation with (phospho-MARK4 (Ser423))
 Polyclonal Antibody, Unconjugated (bs-4660R)
 at 1:200 overnight at 4°C, followed by operating
 according to SP Kit(Rabbit) (sp-0023)
 instructions and DAB staining.