

bs-6225R**[Primary Antibody]****CAMK1D Rabbit pAb****BioSS**
ANTIBODIES

www.bioss.com.cn

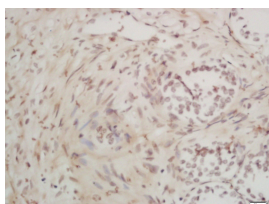
sales@bioss.com.cn

techsupport@bioss.com.cn

400-901-9800

— DATASHEET —

Host: Rabbit	Isotype: IgG	Applications: IHC-P (1:100-500) IHC-F (1:100-500) IF (1:100-500)
Clonality: Polyclonal		
GeneID: 57118	SWISS: Q8IU85	
Target: CAMK1D		Reactivity: Human (predicted: Mouse, Rat, Rabbit, Pig, Cow, Dog, Horse)
Immunogen: KLH conjugated synthetic peptide derived from human CAMK1D: 33-130/385.		
Purification: affinity purified by Protein A		Predicted MW.: 43 kDa
Concentration: 1mg/ml		Subcellular Location: Cytoplasm ,Nucleus
Storage: 0.01M TBS (pH7.4) with 1% BSA, 0.02% Proclin300 and 50% Glycerol. Shipped at 4°C. Store at -20°C for one year. Avoid repeated freeze/thaw cycles.		
Background: CAMK1D is a member of the Ca ²⁺ /calmodulin-dependent protein kinase 1 subfamily of serine/threonine kinases. It may be involved in the regulation of granulocyte function through the chemokine signal transduction pathway and may play a role in apoptosis of erythroleukemia cells.		

— VALIDATION IMAGES —

Tissue/cell: human prostate carcinoma; 4% Paraformaldehyde-fixed and paraffin-embedded; Antigen retrieval: citrate buffer (0.01M, pH 6.0), Boiling bathing for 15min; Block endogenous peroxidase by 3% Hydrogen peroxide for 30min; Blocking buffer (normal goat serum, C-0005) at 37°C for 20 min; Incubation: Anti-CAMK1D Polyclonal Antibody, Unconjugated(bs-6225R) 1:200, overnight at 4°C, followed by conjugation to the secondary antibody(SP-0023) and DAB(C-0010) staining