

## RNF43 Rabbit pAb

Catalog Number: bs-24331R

Target Protein: RNF43

Concentration: 1mg/ml

Form: Liquid

Host: Rabbit

Clonality: Polyclonal

Isotype: IgG

Applications: WB (1:500-2000)

Reactivity: Human, Mouse, Rat (predicted:Pig, Cow, Dog, Horse)

Predicted MW: 83 kDa

Entrez Gene: 54894

Swiss Prot: Q68DV7

Source: KLH conjugated synthetic peptide derived from human RNF43: 401-500/783.

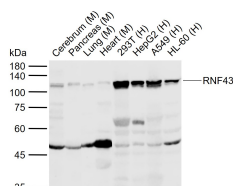
Purification: affinity purified by Protein A

Storage: 0.01M TBS (pH7.4) with 1% BSA, 0.02% Proclin300 and 50% Glycerol.

Shipped at 4°C. Store at -20°C for one year. Avoid repeated freeze/thaw cycles.

**Background:** RNF43 is a probable E3 ubiquitin-protein ligase that promotes cell growth and is upregulated in colon cancer. E3 ubiquitin ligases accept ubiquitin from an E2 ubiquitin-conjugating enzyme in the form of a thioester and then directly transfer the ubiquitin to targeted substrates.

### VALIDATION IMAGES



Sample: Lane 1: Mouse Cerebrum tissue lysates Lane 2: Mouse Pancreas tissue lysates Lane 3: Mouse Lung tissue lysates Lane 4: Mouse Heart tissue lysates Lane 5: Human 293T cell lysates Lane 6: Human HepG2 cell lysates Lane 7: Human A549 cell lysates Lane 8: Human HL-60 cell lysates Primary: Anti-RNF43 (bs-24331R) at 1/1000 dilution Secondary: IRDye800CW Goat Anti-Rabbit IgG at 1/20000 dilution Predicted band size: 83 kDa Observed band size: 110 kDa

### PRODUCT SPECIFIC PUBLICATIONS

[IF=7.109] Ding, Meng. et al. Cancer-associated fibroblasts promote the stemness and progression of renal cell carcinoma via exosomal miR-181d-5p. CELL DEATH DISCOV. 2022 Nov;8(1):1-15 WB,IHC ; Human . 36319622