

**bsm-54625R****[ Primary Antibody ]**

www.bioss.com.cn

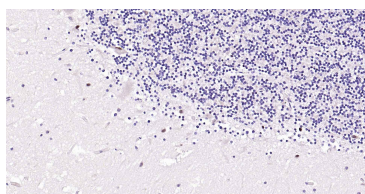
sales@bioss.com.cn

techsupport@bioss.com.cn

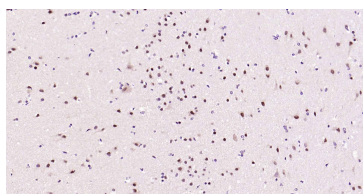
400-901-9800

**SOX1 Recombinant Rabbit mAb****— DATASHEET —**

<b>Host:</b> Rabbit	<b>Isotype:</b> IgG	<b>Applications:</b> IHC-P (1:100-500) IHC-F (1:50-100) IF (1:50-100) ICC/IF (1:50-100)  <b>Reactivity:</b> Human   <b>Predicted MW.:</b> 39 kDa  <b>Subcellular Location:</b> Nucleus
<b>Clonality:</b> Recombinant	<b>CloneNo.:</b> 23C9	
<b>GeneID:</b> 6656	<b>SWISS:</b> O00570	
<b>Target:</b> SOX1		
<b>Immunogen:</b> A synthesized peptide derived from human SOX1: 2-35/391.		
<b>Purification:</b> affinity purified by Protein A		
<b>Concentration:</b> 1mg/ml		
<b>Storage:</b> 0.01M TBS (pH7.4) with 1% BSA, 0.02% Proclin300 and 50% Glycerol. Shipped at 4°C. Store at -20°C for one year. Avoid repeated freeze/thaw cycles.		
<b>Background:</b> This intronless gene encodes a member of the SOX (SRY-related HMG-box) family of transcription factors involved in the regulation of embryonic development and in the determination of the cell fate. The encoded protein may act as a transcriptional activator after forming a protein complex with other proteins. In mice, a similar protein regulates the gamma-crystallin genes and is essential for lens development. [provided by RefSeq, Jul 2008]		

**— VALIDATION IMAGES —**

Paraformaldehyde-fixed, paraffin embedded Human Cerebellum; Antigen retrieval by boiling in sodium citrate buffer (pH6.0) for 15 min; Antibody incubation with SOX1 Monoclonal Antibody, Unconjugated(bsm-54625R) at 1:200 overnight at 4°C, followed by conjugation to the SP Kit(Rabbit, SP-0023) and DAB (C-0010) staining.



Paraformaldehyde-fixed, paraffin embedded Human Cerebrum; Antigen retrieval by boiling in sodium citrate buffer (pH6.0) for 15 min; Antibody incubation with SOX1 Monoclonal Antibody, Unconjugated(bsm-54625R) at 1:200 overnight at 4°C, followed by conjugation to the SP Kit(Rabbit, SP-0023) and DAB (C-0010) staining.