

bs-6281R**[Primary Antibody]****Hepsin/TMPRSS1 Rabbit pAb****BioSS**
ANTIBODIES

www.bioss.com.cn

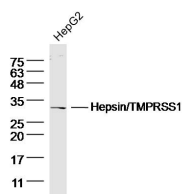
sales@bioss.com.cn

techsupport@bioss.com.cn

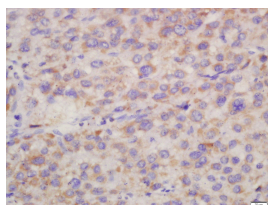
400-901-9800

— DATASHEET —

Host: Rabbit	Isotype: IgG	Applications: WB (1:500-2000)
Clonality: Polyclonal		IHC-P (1:100-500)
GeneID: 3249	SWISS: P05981	IHC-F (1:100-500)
Target: Hepsin/TMPRSS1		IF (1:100-500)
Immunogen: KLH conjugated synthetic peptide derived from human Hepsin: 311-417/417.		Reactivity: Human (predicted: Mouse, Rat, Rabbit, Pig, Sheep, Cow)
Purification: affinity purified by Protein A		
Concentration: 1mg/ml		Predicted MW.: 28 kDa
Storage: 0.01M TBS (pH7.4) with 1% BSA, 0.02% Proclin300 and 50% Glycerol. Shipped at 4°C. Store at -20°C for one year. Avoid repeated freeze/thaw cycles.		Subcellular Location: Cell membrane
Background: This gene encodes a type II transmembrane serine protease. The encoded protein has an extracellular region that consists of two domains, a catalytic serine protease domain and a non-catalytic scavenger receptor cysteine-rich domain. This protein may be involved in diverse cellular functions including blood coagulation, maintenance of cell morphology and the growth and progression of certain cancers, particularly prostate cancer. Alternative splicing results in multiple transcript variants.		

— VALIDATION IMAGES —

Sample: HepG2 (human) Cell Lysate at 40 ug
 Primary: Anti- Hepsin/TMPRSS1 (bs-6281R) at 1/300 dilution
 Secondary: IRDye800CW Goat Anti-Rabbit IgG at 1/20000 dilution
 Predicted band size: 28kD
 Observed band size: 28 kD



Tissue/cell: human liver carcinoma; 4% Paraformaldehyde-fixed and paraffin-embedded; Antigen retrieval: citrate buffer (0.01M, pH 6.0), Boiling bathing for 15min; Block endogenous peroxidase by 3% Hydrogen peroxide for 30min; Blocking buffer (normal goat serum, C-0005) at 37°C for 20 min; Incubation: Anti-Hepsin Polyclonal Antibody, Unconjugated (bs-6281R) 1:200, overnight at 4°C, followed by conjugation to the secondary antibody (SP-0023) and DAB (C-0010) staining