

FUT8 Rabbit pAb

Catalog Number: bs-6280R

Target Protein: FUT8

Concentration: 1mg/ml

Form: Liquid

Host: Rabbit

Clonality: Polyclonal

Isotype: IgG

Applications: WB (1:500-2000), IHC-P (1:100-500)

Reactivity: Mouse, Rat (predicted:Human, Rabbit, Chicken, Dog, Horse)

Predicted MW: 66 kDa

Subcellular Cell membrane ,Cytoplasm

Locations:

Entrez Gene: 2530

Swiss Prot: Q9BYC5

Source: KLH conjugated synthetic peptide derived from human FUT8: 311-410/575.

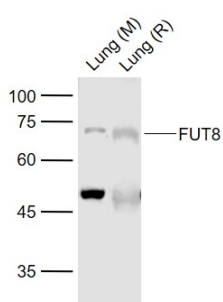
Purification: affinity purified by Protein A

Storage: 0.01M TBS (pH7.4) with 1% BSA, 0.02% Proclin300 and 50% Glycerol.

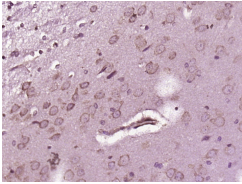
Shipped at 4°C. Store at -20°C for one year. Avoid repeated freeze/thaw cycles.

Background: Catalyzes the addition of fucose in alpha 1-6 linkage to the first GlcNAc residue, next to the peptide chains in N-glycans. The expression of this gene may contribute to the malignancy of cancer cells and to their invasive and metastatic capabilities. There are 2 isoforms produced by alternative splicing. Immunogen is not present in isoform 2 (also known as Retinal).

VALIDATION IMAGES



Sample: Lane 1: Lung (Mouse) Lysate at 40 ug Lane 2: Lung (Rat) Lysate at 40 ug Primary: Anti-FUT8 (bs-6280R) at 1/1000 dilution Secondary: IRDye800CW Goat Anti-Rabbit IgG at 1/20000 dilution Predicted band size: 66 kD Observed band size: 70 kD



Paraformaldehyde-fixed, paraffin embedded (Rat brain); Antigen retrieval by boiling in sodium citrate buffer (pH6.0) for 15min; Block endogenous peroxidase by 3% hydrogen peroxide for 20 minutes; Blocking buffer (normal goat serum) at 37°C for 30min; Antibody incubation with (FUT8) Polyclonal Antibody, Unconjugated (bs-6280R) at 1:400 overnight at 4°C, followed by operating according to SP Kit(Rabbit) (sp-0023) instructions and DAB staining.

PRODUCT SPECIFIC PUBLICATIONS

[IF=2.571] Cheng Zhang. et al. Caveolin - 1 upregulates Fut8 expression by activating the Wnt/ β -catenin pathway to enhance HCC cell proliferative and invasive ability. Cell Biol Int. 2020 Nov;44(11):2202-2212 WB,IHC ; Mouse . 32710651