

bs-1603R**[Primary Antibody]****AARS2 Rabbit pAb****BioSS**
ANTIBODIES

www.bioss.com.cn

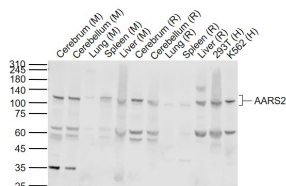
sales@bioss.com.cn

techsupport@bioss.com.cn

400-901-9800

— DATASHEET —

Host: Rabbit	Isotype: IgG	Applications: WB (1:500-2000)
Clonality: Polyclonal		Reactivity: Human, Mouse, Rat (predicted: Dog)
GeneID: 57505	SWISS: Q5JTZ9	
Target: AARS2		
Immunogen: KLH conjugated synthetic peptide derived from human AARS2: 451-550/985.		Predicted MW.: 115 kDa
Purification: affinity purified by Protein A		Subcellular Location: Cytoplasm
Concentration: 1mg/ml		
Storage: 0.01M TBS (pH7.4) with 1% BSA, 0.02% Proclin300 and 50% Glycerol. Shipped at 4°C. Store at -20°C for one year. Avoid repeated freeze/thaw cycles.		
Background: The protein encoded by this gene belongs to the class-II aminoacyl-tRNA synthetase family. Aminoacyl-tRNA synthetases play critical roles in mRNA translation by charging tRNAs with their cognate amino acids. The encoded protein is a mitochondrial enzyme that specifically aminoacylates alanyl-tRNA. Mutations in this gene are a cause of combined oxidative phosphorylation deficiency 8. [provided by RefSeq, Dec 2011].		

— VALIDATION IMAGES —

Sample: Lane 1: Cerebrum (Mouse) Lysate at 40 ug
 Lane 2: Cerebellum (Mouse) Lysate at 40 ug
 Lane 3: Lung (Mouse) Lysate at 40 ug
 Lane 4: Spleen (Mouse) Lysate at 40 ug
 Lane 5: Liver (Mouse) Lysate at 40 ug
 Lane 6: Cerebrum (Rat) Lysate at 40 ug
 Lane 7: Cerebellum (Rat) Lysate at 40 ug
 Lane 8: Lung (Rat) Lysate at 40 ug
 Lane 9: Spleen (Rat) Lysate at 40 ug
 Lane 10: Liver (Rat) Lysate at 40 ug
 Lane 11: 293T (Human) Cell Lysate at 30 ug
 Lane 12: K562 (Human) Cell Lysate at 30 ug
 Primary: Anti-AARS2 (bs-1603R) at 1/1000 dilution
 Secondary: IRDye800CW Goat Anti-Rabbit IgG at 1/20000 dilution
 Predicted band size: 107 kD
 Observed band size: 110 kD