

bs-1971R**[Primary Antibody]****Lxn Rabbit pAb****Bioss**
ANTIBODIES

www.bioss.com.cn

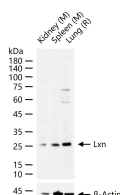
sales@bioss.com.cn

techsupport@bioss.com.cn

400-901-9800

— DATASHEET —

Host: Rabbit	Isotype: IgG	Applications: WB (1:500-2000)
Clonality: Polyclonal		Reactivity: Mouse, Rat (predicted: Human, Rabbit, Pig, Cow, Horse)
GeneID: 56925	SWISS: Q9BS40	
Target: Lxn		Predicted MW.: 25 kDa
Immunogen: KLH conjugated synthetic peptide derived from human Lxn: 131-222/222.		Subcellular Location: Cytoplasm
Purification: affinity purified by Protein A		
Concentration: 1mg/ml		
Storage: 0.01M TBS (pH7.4) with 1% BSA, 0.02% Proclin300 and 50% Glycerol. Shipped at 4°C. Store at -20°C for one year. Avoid repeated freeze/thaw cycles.		
Background: Latexin, a protein possessing inhibitory activity against rat carboxypeptidase A1 (CPA1) and CPA2, is expressed in a neuronal subset in the cerebral cortex and cells in other neural and non- neural tissues of rat. Although latexin also inhibits mast-cell CPA (MCCPA), the expression of latexin in rat mast cells has not previously been confirmed.		

— VALIDATION IMAGES —

25 ug total protein per lane of various lysates
(see on figure) probed with Lxn polyclonal
antibody, unconjugated (bs-1971R) at 1:500
dilution and 4°C overnight incubation. Followed
by conjugated secondary antibody incubation at
r.t. for 60 min.