

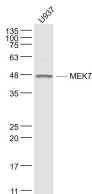
bs-1979R**[Primary Antibody]****Bioss**
ANTIBODIES

www.bioss.com.cn

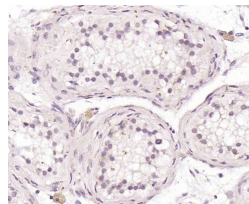
sales@bioss.com.cn

techsupport@bioss.com.cn

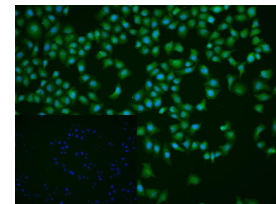
400-901-9800

MEK7 Rabbit pAb**— DATASHEET —****Host:** Rabbit**Isotype:** IgG**Clonality:** Polyclonal**GeneID:** 5609**SWISS:** O14733**Target:** MEK7**Immunogen:** KLH conjugated synthetic peptide derived from human MKK7: 301-419/419.**Purification:** affinity purified by Protein A**Concentration:** 1mg/ml**Storage:** 0.01M TBS (pH7.4) with 1% BSA, 0.02% Proclin300 and 50% Glycerol.
Shipped at 4°C. Store at -20°C for one year. Avoid repeated freeze/thaw cycles.**Background:** The protein encoded by this gene is a dual specificity protein kinase that belongs to the MAP kinase kinase family. This kinase specifically activates MAPK8/JNK1 and MAPK9/JNK2, and this kinase itself is phosphorylated and activated by MAP kinase kinase kinases including MAP3K1/MEKK1, MAP3K2/MEKK2, MAP3K3/MEKK5, and MAP4K2/GCK. This kinase is involved in the signal transduction mediating the cell responses to proinflammatory cytokines, and environmental stresses. Multiple alternatively spliced transcript variants encoding distinct isoforms have been found, but only one transcript variant has been supported and defined. [provided by RefSeq, Jul 2008].**Applications:** WB (1:500-2000)**IHC-P** (1:100-500)**IHC-F** (1:100-500)**IF** (1:100-500)**Flow-Cyt** (0.5ug/Test)**ICC/IF** (1:50)**Reactivity:** Human (predicted: Mouse, Rat, Pig, Sheep, Dog, Horse)**Predicted MW.:** 46 kDa**Subcellular Location:** Cytoplasm ,Nucleus**— VALIDATION IMAGES —**

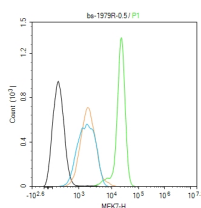
Sample: U937(Human) Cell Lysate at 30 ug
 Primary: Anti- MEK7 (bs-1979R) at 1/1000 dilution
 Secondary: IRDye800CW Goat Anti-Rabbit IgG at 1/20000 dilution
 Predicted band size: 46 kD
 Observed band size: 46 kD



Paraformaldehyde-fixed, paraffin embedded (human testis); Antigen retrieval by boiling in sodium citrate buffer (pH6.0) for 15min; Block endogenous peroxidase by 3% hydrogen peroxide for 20 minutes; Blocking buffer (normal goat serum) at 37°C for 30min; Incubation with (MEK7) Polyclonal Antibody, Unconjugated (bs-1979R) at 1:200 overnight at 4°C, followed by operating according to SP Kit(Rabbit) (sp-0023) instructions and DAB staining.



4% Paraformaldehyde-fixed HeLa (H) cell; Triton X-100 at r.t. for 20 min; Antibody incubation with (MEK7) polyclonal Antibody, unconjugated (bs-1979R) 1:50, 90 min at 37°C; followed by conjugated Goat Anti-Rabbit IgG antibody (green, bs-60295G-FITC) at 37°C for 90 min, DAPI (blue, C02-04002) was used to stain the cell nuclei. PBS instead of the primary antibody was used as the blank control.



The HeLa (H) cells were fixed with 4% PFA (10 min at r.t.) and then permeabilized with 90% ice-cold methanol for 20 min at -20°C. Primary Antibody (green): Rabbit Anti-MEK7 antibody

Important Note: This product as supplied is intended for research use only, not for use in human, therapeutic or diagnostic applications.

(bs-1979R): 0.5µg/10⁶ cells; Secondary
Antibody (white blue): Goat anti-Rabbit IgG-FITC
(bs-60295G-FITC): 1 µg/test. Isotype Control
(orange): Rabbit IgG (bs-0295P). Blank control
(black): PBS. Acquisition of 20,000 events was
performed.

— SELECTED CITATIONS —

- **[IF=5.3]** Caixia Tan. et al. Mcl-1 downregulation enhances BCG treatment efficacy in bladder cancer by promoting macrophage polarization. *Cancer Cell International*. 2025 Feb 15;25(1):48. ;. 39955585