

## CD244 Rabbit pAb

Catalog Number: bs-13776R

Target Protein: CD244

Concentration: 1mg/ml

Form: Liquid

Host: Rabbit

Clonality: Polyclonal

Isotype: IgG

Applications: WB (1:500-2000)

Reactivity: Human (predicted:Mouse, Rat)

Predicted MW: 39 kDa

Entrez Gene: 51744

Swiss Prot: Q9BZW8

Source: KLH conjugated synthetic peptide derived from human NKR2B4: 1-100/370.

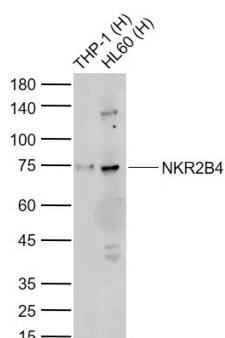
Purification: affinity purified by Protein A

Storage: 0.01M TBS (pH7.4) with 1% BSA, 0.02% Proclin300 and 50% Glycerol.

Shipped at 4°C. Store at -20°C for one year. Avoid repeated freeze/thaw cycles.

**Background:** CD244 is expressed on all human NK cells, a subpopulation of T cells, basophils and monocytes. CD244 activates NK cell mediated cytotoxicity, induces secretion of IFN-gamma and matrix metalloproteinases, and NK cell invasiveness. Although there have been several molecules shown to interact with CD244, the signaling mechanism of CD244-mediated activation of NK cells is still unknown. It is a high affinity receptor for CD48.

### VALIDATION IMAGES



Sample: Lane 1: Human THP-1 cell lysates Lane 2: Human HL60 cell lysates Primary: Anti-NKR2B4 (bs-13776R) at 1/1000 dilution Secondary: IRDye800CW Goat Anti-Rabbit IgG at 1/20000 dilution Predicted band size: 39 kD Observed band size: 75 kD