

bsm-52194R**[Primary Antibody]****BioSS**
ANTIBODIES

www.bioss.com.cn

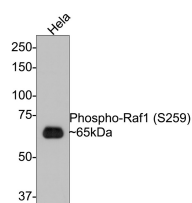
sales@bioss.com.cn

techsupport@bioss.com.cn

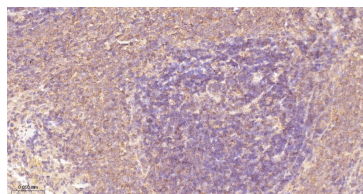
400-901-9800

phospho-RAF1 (Ser259) Recombinant Rabbit mAb**— DATASHEET —**

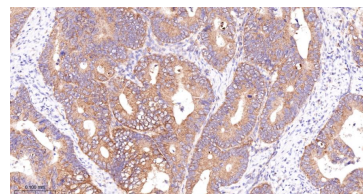
Host: Rabbit	Isotype: IgG	Applications: WB (1:500-2000) IHC-P (1:50-200) IHC-F (1:50-200) IF (1:50-200) Reactivity: Human, Mouse, Rat Predicted MW.: 73 kDa Subcellular Location: Cell membrane ,Cytoplasm ,Nucleus
Clonality: Recombinant	CloneNo.: 2A1	
GeneID: 5894	SWISS: P04049	
Target: phospho-RAF1 (Ser259)		
Immunogen: KLH conjugated Synthesised phosphopeptide derived from human RAF1 around the phosphorylation site of Ser259: ST(p-S)TP.		
Purification: affinity purified by Protein A		
Concentration: 1mg/ml		
Storage: 0.01M TBS (pH7.4) with 1% BSA, 0.02% Proclin300 and 50% Glycerol. Shipped at 4°C. Store at -20°C for one year. Avoid repeated freeze/thaw cycles.		
Background: The Raf family of serine/threonine specific kinases is comprised of three members (aRaf, bRaf, and cRaf) that play a critical role in regulating cell growth and differentiation, and couple growth factor receptor stimulation to nuclear transcription factors via the Ras/mitogen activated protein kinase (MAPK) pathway. cRaf kinase (also known as Raf1) is a small GTPase like kinase of 73 kDa, and is a signal transducer of multiple extracellular stimuli that is regulated by several pathways, and that once activated, phosphorylates MEK which in turn phosphorylates ERK. Raf1 is involved in the transduction of mitogenic signals from the cell membrane to the nucleus. It is part of the Ras dependent signaling pathway from receptors to the nucleus.		

— VALIDATION IMAGES —

Western blot analysis of Phospho-Raf1 (S259) on Hela cell lysates with Rabbit anti-Phospho-Raf1 (S259) antibody (bsm-52194R) at 1/500 dilution. Lysates/proteins at 10 µg/Lane. Predicted band size: 73 kDa Observed band size: 65 kDa Exposure time: 1 minute; 8% SDS-PAGE gel. Proteins were transferred to a PVDF membrane and blocked with 5% NFDM/TBST for 1 hour at room temperature. The primary antibody (bsm-52194R) at 1/500 dilution was used in 5% NFDM/TBST at room temperature for 2 hours. Goat Anti-Rabbit IgG - HRP Secondary Antibody at 1:300,000 dilution was used for 1 hour at room temperature.



Paraformaldehyde-fixed, paraffin embedded Rat Spleen; Antigen retrieval by boiling in sodium citrate buffer (pH6.0) for 15 min; The section was incubated with phospho-RAF1 (Ser259) Monoclonal Antibody, Unconjugated (bsm-52194R) at 1:200 overnight at 4°C, followed by conjugation to the bs-0295G-HRP and DAB (C-0010) staining.



Paraformaldehyde-fixed, paraffin embedded Human Colon Cancer; Antigen retrieval by boiling in sodium citrate buffer (pH6.0) for 15 min; The section was incubated with phospho-RAF1 (Ser259) Monoclonal Antibody, Unconjugated (bsm-52194R) at 1:200 overnight at 4°C, followed by conjugation to the bs-0295G-HRP and DAB (C-0010) staining.

— SELECTED CITATIONS —

- **[IF=2.1]** Sining Feng, et al. Effects of combination treatment with transcranial magnetic stimulation and bone marrow mesenchymal stem cell transplantation or Raf inhibition on spinal cord injury in rats. Mol Med Rep. 2021 Apr;23(4):1-10 WB ;Rat. 33649786

Important Note: This product as supplied is intended for research use only, not for use in human, therapeutic or diagnostic applications.