

bs-3704R**[Primary Antibody]****phospho-P53 (Ser315) Rabbit pAb****BioSS**
ANTIBODIES

www.bioss.com.cn

sales@bioss.com.cn

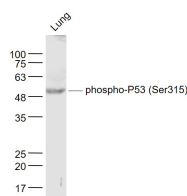
techsupport@bioss.com.cn

400-901-9800

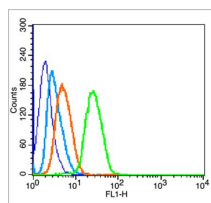
— DATASHEET —

<p>Host: Rabbit</p> <p>Clonality: Polyclonal</p> <p>GeneID: 7157</p> <p>Target: P53 (Ser315)</p> <p>Immunogen: KLH conjugated synthesised phosphopeptide derived from human P53 around the phosphorylation site of Ser315: SS(p-S)PQ.</p> <p>Purification: affinity purified by Protein A</p> <p>Concentration: 1mg/ml</p> <p>Storage: 0.01M TBS (pH7.4) with 1% BSA, 0.02% Proclin300 and 50% Glycerol. Shipped at 4°C. Store at -20°C for one year. Avoid repeated freeze/thaw cycles.</p> <p>Background: This gene encodes a tumor suppressor protein containing transcriptional activation, DNA binding, and oligomerization domains. The encoded protein responds to diverse cellular stresses to regulate expression of target genes, thereby inducing cell cycle arrest, apoptosis, senescence, DNA repair, or changes in metabolism. Mutations in this gene are associated with a variety of human cancers, including hereditary cancers such as Li-Fraumeni syndrome. Alternative splicing of this gene and the use of alternate promoters result in multiple transcript variants and isoforms. Additional isoforms have also been shown to result from the use of alternate translation initiation codons (PMIDs: 12032546, 20937277). [provided by RefSeq, Feb 2013].</p>	<p>Isotype: IgG</p> <p>SWISS: P04637</p>	<p>Applications: WB (1:500-2000) Flow-Cyt (1µg /Test)</p> <p>Reactivity: Human, Mouse</p> <p>Predicted MW.: 43 kDa</p> <p>Subcellular Location: Cytoplasm ,Nucleus</p>
---	--	--

— VALIDATION IMAGES —



Sample: Lung (Mouse) Lysate at 40 ug Primary: Anti-phospho-P53 (Ser315) (bs-3704R) at 1/300 dilution Secondary: IRDye800CW Goat Anti-Rabbit IgG at 1/20000 dilution Predicted band size: 43 kD Observed band size: 53 kD



Blank control (blue line): HeLa (fixed with 70% ethanol (Overnight at 4°C) and then permeabilized with 90% ice-cold methanol for 30 min on ice). Primary Antibody (green line): Rabbit Anti-phospho-P53 (Ser315) antibody (bs-3704R), Dilution: 1µg /10⁶ cells; Isotype Control Antibody (orange line): Rabbit IgG . Secondary Antibody (white blue line): Goat anti-rabbit IgG-FITC, Dilution: 1µg /test.

— SELECTED CITATIONS —

- **[IF=4.114]** Qi Song. et al. The functional landscape of Golgi membrane protein 1 (GOLM1) phosphoproteome reveal GOLM1 regulating P53 that promotes malignancy. Cell Death Discov. 2021 Mar;7(1):1-15 WB ;Human. 33649292