

**bs-13774R****[ Primary Antibody ]****phospho-14-3-3 theta (Ser232) Rabbit pAb****BioSS**  
**ANTIBODIES**

www.bioss.com.cn

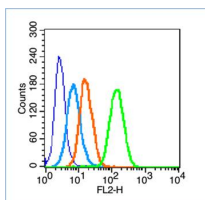
sales@bioss.com.cn

techsupport@bioss.com.cn

400-901-9800

**— DATASHEET —**

<b>Host:</b> Rabbit <b>Clonality:</b> Polyclonal <b>GeneID:</b> 10971 <b>Target:</b> 14-3-3 theta (Ser232) <b>Immunogen:</b> KLH conjugated synthesised phosphopeptide derived from human 14-3-3 Tau around the phosphorylation site of Ser232: SD(p-S)AG. <b>Purification:</b> affinity purified by Protein A <b>Concentration:</b> 1mg/ml <b>Storage:</b> 0.01M TBS (pH7.4) with 1% BSA, 0.02% Proclin300 and 50% Glycerol. Shipped at 4°C. Store at -20°C for one year. Avoid repeated freeze/thaw cycles. <b>Background:</b> This gene product belongs to the 14-3-3 family of proteins which mediate signal transduction by binding to phosphoserine-containing proteins. This highly conserved protein family is found in both plants and mammals, and this protein is 99% identical to the mouse and rat orthologs. This gene is upregulated in patients with amyotrophic lateral sclerosis. It contains in its 5' UTR a 6 bp tandem repeat sequence which is polymorphic, however, there is no correlation between the repeat number and the disease. [provided by RefSeq, Jul 2008]	<b>Isotype:</b> IgG <b>SWISS:</b> P27348	<b>Applications:</b> Flow-Cyt (1µg/Test) <b>Reactivity:</b> Human (predicted: Mouse, Rat, Pig, Sheep, Cow, Horse) <b>Predicted MW.:</b> 28 kDa <b>Subcellular Location:</b> Cytoplasm
---	---	--

**— VALIDATION IMAGES —**

Blank control (blue line): HL60 (fixed with 70% ethanol (overnight at 4°C) and then permeabilized with 0.1% PBS-Tween for 20 min at room temperature). Primary Antibody (green line): Rabbit Anti-phospho-14-3-3 Tau (Ser232) antibody (bs-13774R), Dilution: 1µg/10<sup>6</sup> cells; Isotype Control Antibody (orange line): Rabbit IgG. Secondary Antibody (white blue line): Goat anti-rabbit IgG-PE, Dilution: 1µg/test.