

bs-11579R**[Primary Antibody]****QK1 Rabbit pAb****BioSS**
ANTIBODIES

www.bioss.com.cn

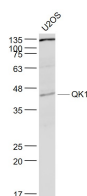
sales@bioss.com.cn

techsupport@bioss.com.cn

400-901-9800

— DATASHEET —

Host: Rabbit	Isotype: IgG	Applications: WB (1:500-2000)
Clonality: Polyclonal		Reactivity: Human (predicted: Mouse, Rat, Sheep, Chicken, Horse)
GeneID: 9444	SWISS: Q96PU8	
Target: QK1		
Immunogen: KLH conjugated synthetic peptide derived from human QK1: 220/341/341.		Predicted MW.: 38 kDa
Purification: affinity purified by Protein A		Subcellular Location: Cytoplasm ,Nucleus
Concentration: 1mg/ml		
Storage: 0.01M TBS (pH7.4) with 1% BSA, 0.02% Proclin300 and 50% Glycerol. Shipped at 4°C. Store at -20°C for one year. Avoid repeated freeze/thaw cycles.		
Background: QKI is a 341 amino acid protein that localizes to both the cytoplasm and the nucleus and contains one KH domain. Expressed in the frontal cortex of the brain, QKI functions as an RNA-binding protein that plays an important role in myelination and specifically binds to the RNA core sequence 5'-NACUAAY-N(1,20)-UAAY-3'. Additionally, QKI regulates pre-mRNA splicing, and mRNA export and is involved in protecting and promoting the stability of select mRNAs. QKI may be methylated by PRMT1 and may also be phosphorylated at its C-terminus, an event that decreases QKI mRNA-binding affinity. Defects or deletions in the gene encoding QKI are associated with astrocytic tumors and may be involved in the pathogenesis of schizophrenia. Multiple isoforms of QKI exist due to alternative splicing events.		

— VALIDATION IMAGES —

Sample: U2OS(Human) Cell Lysate at 30 ug
Primary: Anti- QK1 (bs-11579R) at 1/1000 dilution
Secondary: IRDye800CW Goat Anti-Rabbit IgG at 1/20000 dilution Predicted band size: 38 kD
Observed band size: 40 kD