

**bs-8747R****[ Primary Antibody ]****Bioss**  
ANTIBODIES

www.bioss.com.cn

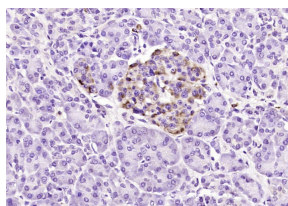
sales@bioss.com.cn

techsupport@bioss.com.cn

400-901-9800

**Phospholipase D2 Rabbit pAb****— DATASHEET —**

<b>Host:</b> Rabbit	<b>Isotype:</b> IgG	<b>Applications:</b> <b>IHC-P</b> (1:100-500)
<b>Clonality:</b> Polyclonal		<b>IHC-F</b> (1:100-500)
<b>GeneID:</b> 5338	<b>SWISS:</b> O14939	<b>IF</b> (1:100-500)
<b>Target:</b> Phospholipase D2		
<b>Immunogen:</b> KLH conjugated synthetic peptide derived from human PLD2/Phospholipase D2: 21-120/933.		
<b>Purification:</b> affinity purified by Protein A		<b>Reactivity:</b> Human (predicted: Mouse, Rat, Rabbit, Sheep, Cow, Dog, Horse)
<b>Concentration:</b> 1mg/ml		
<b>Storage:</b> 0.01M TBS (pH7.4) with 1% BSA, 0.02% Proclin300 and 50% Glycerol. Shipped at 4°C. Store at -20°C for one year. Avoid repeated freeze/thaw cycles.		<b>Predicted MW.:</b> 106 kDa
		<b>Subcellular Location:</b> Cell membrane

**— VALIDATION IMAGES —**

Paraformaldehyde-fixed, paraffin embedded (human pancreatic cancer); Antigen retrieval by boiling in sodium citrate buffer (pH6.0) for 15min; Block endogenous peroxidase by 3% hydrogen peroxide for 20 minutes; Blocking buffer (normal goat serum) at 37°C for 30min; Antibody incubation with (Phospholipase D2) Polyclonal Antibody, Unconjugated (bs-8747R) at 1:200 overnight at 4°C, followed by operating according to SP Kit(Rabbit) (sp-0023) instructions and DAB staining.

**— SELECTED CITATIONS —**

- **[IF=3.647]** Chang Y et al. The in vitro effects of phospholipase D1-mTOR axis in liver fibrogenesis. Life Sci . 2020 Jun 15;251:117595. IHC ;mouse. 32240681