
Bcl-2 Mouse mAb

Catalog Number: bsm-10846M

Target Protein: Bcl-2

Concentration: 1mg/ml

Form: Size : 50ul/100ul/200ul

Liquid

Size : 200ug (PBS only)

Lyophilized

Note: Centrifuge tubes before opening. Reconstitute the lyophilized product in distilled water. Optimal concentration should be determined by the end user.

Host: Mouse

Clonality: Monoclonal

Clone No.: 1A5

Isotype: IgG

Applications: WB (1:500-2000), Flow-Cyt (1µg/Test), ICC/IF (1:50-200)

Reactivity: Human

Predicted MW: 26 kDa

Entrez Gene: 596

Swiss Prot: P10415

Source: Recombinant human Bcl-2 protein : 1-211/239 (C-6x His-Tag).

Purification: affinity purified by Protein G

Storage: Size : 50ul/100ul/200ul

Preservative: 0.02% Proclin300, Constituents: 1% BSA, 0.01M PBS, pH7.4.

Size : 200ug (PBS only)

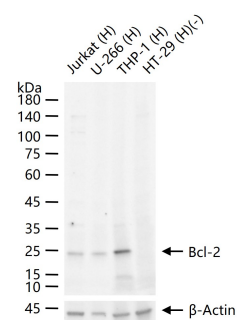
0.01M PBS

Shipped at 4°C. Store at -20°C for one year. Avoid repeated freeze/thaw cycles.

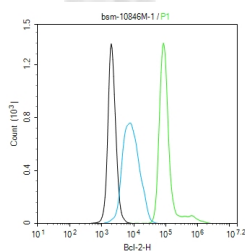
Background: The Bcl-2 gene was isolated at the chromosomal breakpoint of t(14;18)-bearing follicular B cell lymphomas(1,2).Bcl-2 blocks cell death following a variety of stimuli and confers a death-sparing effect to certain hematopoietic cell lines following growth factor withdrawal (3,5).Bcl-2 appears to function in several subcellular locations yet lacks any known motifs that would confer insight into its mechanism of action (6,7).A more recently identified protein,designated Bax p21(i.e., Bcl-associated X protein),has extensive amino acid homology with Bcl-2 and both homodimerizes and forms heterodimers with Bcl-2(8). Overexpression of Bax accelerates apoptotic death induced by cytokine deprivation in an

IL-3 dependent cell line and Bax also counters the death repressor activity of Bcl-2(8).

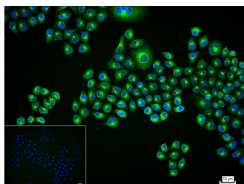
VALIDATION IMAGES



25 ug total protein per lane of various lysates (see on figure) probed with Bcl-2 monoclonal antibody, unconjugated (bsm-10846M) at 1:1000 dilution and 4°C overnight incubation. Followed by conjugated secondary antibody incubation at r.t. for 60 min.



The HeLa (H) cells were fixed with 4% PFA (10 min at r.t.) and then permeabilized with 90% ice-cold methanol for 20 min at -20°C, the cells then were incubated in 5%BSA to block non-specific protein-protein interactions (30 min at r.t.). Primary Antibody (green): Mouse Anti-Bcl-2 antibody (bsm-10846M): 1 µg/10⁶ cells; Secondary Antibody (white blue): Goat anti-Mouse IgG-BF488(bs-60296G-BF488): 1 µg/test. Blank control (black): PBS. Acquisition of 20,000 events was performed.



4% Paraformaldehyde-fixed HeLa (H) cell; Triton X-100 at r.t. for 20 min; Antibody incubation with (Bcl-2) monoclonal Antibody, unconjugated (bsm-10846M) 1:100, 90 min at 37°C; followed by conjugated Goat Anti-Mouse IgG antibody (green, bs-60296G-BF488) at 37°C for 90 min, DAPI (blue, C02-04002) was used to stain the cell nuclei. PBS instead of the primary antibody was used as the blank control.