

bs-8740R**[Primary Antibody]****alpha Sarcoglycan Rabbit pAb****BioSS**
ANTIBODIES

www.bioss.com.cn

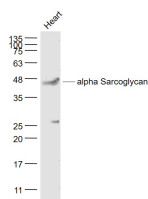
sales@bioss.com.cn

techsupport@bioss.com.cn

400-901-9800

— DATASHEET —

Host: Rabbit	Isotype: IgG	Applications: WB (1:500-2000)
Clonality: Polyclonal		
GeneID: 6442	SWISS: Q16586	
Target: alpha Sarcoglycan		
Immunogen: KLH conjugated synthetic peptide derived from human alpha Sarcoglycan: 51-150/387.		
Purification: affinity purified by Protein A		Reactivity: Rat (predicted: Human, Mouse, Rabbit, Pig, Dog)
Concentration: 1mg/ml		Predicted MW.: 40 kDa
Storage: Preservative: 0.02% Proclin300, Constituents: 1% BSA, 0.01M PBS, pH7.4. Shipped at 4°C. Store at -20°C for one year. Avoid repeated freeze/thaw cycles.		Subcellular Location: Cell membrane ,Cytoplasm
Background: Component of the sarcoglycan complex, a subcomplex of the dystrophin-glycoprotein complex which forms a link between the F-actin cytoskeleton and the extracellular matrix.		

— VALIDATION IMAGES —

Sample: Heart(Rat) Lysate at 40 ug Primary: Anti-alpha Sarcoglycan (bs-8740R) at 1/1000 dilution
Secondary: IRDye800CW Goat Anti-Rabbit IgG at 1/20000 dilution Predicted band size: 40 kD
Observed band size: 40 kD