

bs-11571R**[Primary Antibody]****LRRTM3 Rabbit pAb****BioSS**
ANTIBODIES

www.bioss.com.cn

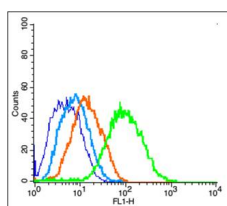
sales@bioss.com.cn

techsupport@bioss.com.cn

400-901-9800

DATASHEET

Host: Rabbit	Isotype: IgG	Applications: Flow-Cyt (1µg/Test)
Clonality: Polyclonal		Reactivity: Mouse (predicted: Human, Rat, Rabbit, Pig, Sheep, Cow, Chicken, Monkey)
GeneID: 347731	SWISS: Q86VH5	
Target: LRRTM3		Predicted MW.: 63 kDa
Immunogen: KLH conjugated synthetic peptide derived from human LRRTM3: 31-120/581. < Extracellular >		Subcellular Location: Cell membrane
Purification: affinity purified by Protein A		
Concentration: 1mg/ml		
Storage: 0.01M TBS (pH7.4) with 1% BSA, 0.02% Proclin300 and 50% Glycerol. Shipped at 4°C. Store at -20°C for one year. Avoid repeated freeze/thaw cycles.		
Background: The leucine-rich (LRR) repeat is a 20-30 amino acid motif that forms a hydrophobic Alpha/Beta horseshoe fold, allowing it to accommodate several leucine residues within a tightly packed core. All LRR repeats contain a variable segment and a highly conserved segment, the latter of which accounts for 11 or 12 residues of the entire LRR motif. The LRRTM protein family plays a role in the regulation of various cellular events during nervous system development. Localizing predominantly to the nervous system, LRRTM family members are known to exhibit synaptogenic activity. LRRTM3 (leucine rich repeat transmembrane neuronal 3) is a 581 amino acid single-pass type I membrane protein belonging to the LRRTM family. LRRTM3 is involved in the development and maintenance of the vertebrate nervous system, and contains ten LRR repeats. Expressed in neuronal tissues, LRRTM3 is encoded by a gene that maps to a region of chromosome 10 that has been linked to late-onset Alzheimer disease and elevated plasma Beta-Amyloid. As a result of alternative splicing events, two LRRTM3 isoforms exist.		

VALIDATION IMAGES

Blank control (blue line): Mouse brain (fixed with 2% paraformaldehyde for 10 min at room temperature, and then stained with Primary Antibody for 30 min at room temperature).
Primary Antibody (green line): Rabbit Anti-LRRTM3 antibody (bs-11571R), Dilution: 1µg / 10⁶ cells; Isotype Control Antibody (orange line): Rabbit IgG . Secondary Antibody (white blue line): Goat anti-rabbit IgG-FITC, Dilution: 1µg / test.