

bs-11616R**[Primary Antibody]****TAS2R16 Rabbit pAb****BioSS**
ANTIBODIES

www.bioss.com.cn

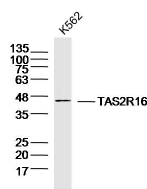
sales@bioss.com.cn

techsupport@bioss.com.cn

400-901-9800

— DATASHEET —

Host: Rabbit	Isotype: IgG	Applications: WB (1:500-2000)
Clonality: Polyclonal		Reactivity: Human
GeneID: 50833	SWISS: Q9NYV7	
Target: TAS2R16		
Immunogen: KLH conjugated synthetic peptide derived from human TAS2R16: 147-182/291. < Extracellular >		Predicted MW.: 34 kDa
Purification: affinity purified by Protein A		Subcellular Location: Cell membrane
Concentration: 1mg/ml		
Storage: 0.01M TBS (pH7.4) with 1% BSA, 0.02% Proclin300 and 50% Glycerol. Shipped at 4°C. Store at -20°C for one year. Avoid repeated freeze/thaw cycles.		
Background: This gene encodes a member of a family of candidate tastereceptors that are members of the G protein-coupled receptorsuperfamily. These family members are specifically expressed bytaste receptor cells of the tongue and palate epithelia. Each ofthese apparently intronless genes encodes a 7-transmembranereceptor protein, functioning as a bitter taste receptor. This geneis clustered with another 3 candidate taste receptor genes inchromosome 7 and is genetically linked to loci that influencebitter perception. [provided by RefSeq, Jul 2008].		

— VALIDATION IMAGES —

Sample: K562 cell (human) Lysate at 40 ug
Primary: Anti- TAS2R16 (bs-11616R) at 1/300
dilution Secondary: IRDye800CW Goat Anti-
Rabbit IgG at 1/20000 dilution Predicted band
size: 34kD Observed band size: 44 kD