

bs-1973R**[Primary Antibody]**

Bioss
ANTIBODIES

www.bioss.com.cn

sales@bioss.com.cn

techsupport@bioss.com.cn

400-901-9800

Lipoprotein lipase Rabbit pAb

DATASHEET

Host: Rabbit**Isotype:** IgG**Clonality:** Polyclonal**GeneID:** 4023**SWISS:** P06858**Target:** Lipoprotein lipase**Immunogen:** KLH conjugated synthetic peptide derived from human LPL: 401-475/475.**Purification:** affinity purified by Protein A**Concentration:** 1mg/ml**Storage:** 0.01M TBS (pH7.4) with 1% BSA, 0.02% Proclin300 and 50% Glycerol.

Shipped at 4°C. Store at -20°C for one year. Avoid repeated freeze/thaw cycles.

Background: Lipoprotein lipase (LPL) is the central enzyme in plasma triglyceride hydrolysis and is secreted by macrophages in the subendothelial space. Evidence has been provided that LPL produced by macrophages in the vessel wall exerts proatherogenic effects. The atherogenic effects of LPL have been mainly attributed to its ability to favor lipid accumulation within macrophages present in the atherosclerotic lesion. Recently, it has also been shown that LPL promote the development of atherosclerosis through facilitation of monocyte adhesion to endothelial cells, stimulation of tumor necrosis factor alpha (TNF) secretion and induction of vascular smooth muscle cell proliferation.

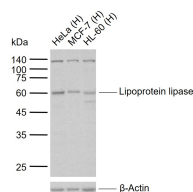
Applications: WB (1:500-2000)**IHC-P** (1:100-500)**IHC-F** (1:100-500)**IF** (1:100-500)**Flow-Cyt** (0.2µg /test)

Reactivity: Human, Mouse, Rat
(predicted: Rabbit, Pig, Sheep, Cow, GuineaPig)

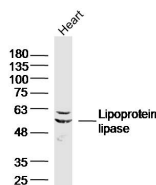
Predicted MW.: 52 kDa

Subcellular Location: Secreted ,Cell membrane
Cytoplasm

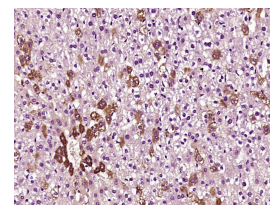
VALIDATION IMAGES



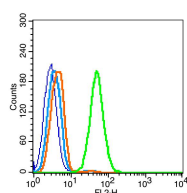
Sample: Lane 1: Human HeLa cell lysates Lane 2: Human MCF-7 cell lysates Lane 3: Human HL-60 cell lysates Primary: Anti-Lipoprotein lipase (bs-1973R) at 1/1000 dilution Secondary: IRDye800CW Goat Anti-Rabbit IgG at 1/20000 dilution Predicted band size: 52 kDa Observed band size: 60 kDa



Sample: Heart (Mouse) Lysate at 40 ug Primary: Anti-Lipoprotein lipase (bs-1973R) at 1/300 dilution Secondary: IRDye800CW Goat Anti-Rabbit IgG at 1/20000 dilution Predicted band size: 52kD Observed band size: 55kD



Paraformaldehyde-fixed, paraffin embedded (Rat liver); Antigen retrieval by boiling in sodium citrate buffer (pH6.0) for 15min; Block endogenous peroxidase by 3% hydrogen peroxide for 20 minutes; Blocking buffer (normal goat serum) at 37°C for 30min; Antibody incubation with (Lipoprotein lipase) Polyclonal Antibody, Unconjugated (bs-1973R) at 1:400 overnight at 4°C, followed by operating according to SP Kit(Rabbit) (sp-0023) instructions and DAB staining.



Blank control (blue line): cells fixed with pre-warmed 4% paraformaldehyde for 30min at 37°C and then permeabilized with 90% ice-cold

Important Note: This product as supplied is intended for research use only, not for use in human, therapeutic or diagnostic applications.

methanol for 30 min on ice) Primary Antibody
(green line): Rabbit Anti-Lipoprotein lipase
antibody (bs-1973R); Dilution: 0.2µg /10⁶ cells;
Isotype Control Antibody (orange line): Rabbit
IgG . Secondary Antibody (white blue line): Goat
anti-rabbit IgG-PE; Dilution: 1µg /test.

— SELECTED CITATIONS —

- **[IF=13.116]** Shalaka Wahane. et al. Diversified transcriptional responses of myeloid and glial cells in spinal cord injury shaped by HDAC3 activity. Sci Adv. 2021 Feb;7(9):eabd8811 IHC ;Mouse. 33637528
- **[IF=5.6]** Yating Fan. et al. β-Sitosterol Suppresses Lipopolysaccharide-Induced Inflammation and Lipogenesis Disorder in Bovine Mammary Epithelial Cells. INT J MOL SCI. 2023 Jan;24(19):14644 WB ;Bovine. 37834091
- **[IF=4.9]** Yi Li. et al. Kaili sour soup in alleviation of hepatic steatosis in rats via lycopene route: an experimental study. ANN MED. 2025 四月 21 WB ;Rat. 40257305
- **[IF=5]** Tam Nguyen. et al. Treprostinil palmitil inhalation powder leverages endogenous lung enzymes to provide sustained treprostinil. EXPERT OPIN DRUG DEL. 2024 九月 12 WB ;Human. 39234785
- **[IF=3.514]** Li B et al. Resistin up-regulates LPL expression through the PPARγ-dependent PI3K/AKT signaling pathway impacting lipid accumulation in RAW264. 7 macrophages.Cytokine. 2019 Jul;119:168-174. WB ;Mouse. 30925325